

Cloudera Management Console in on premises Overview

Date published: 2023-12-16

Date modified: 2025-11-08

The Cloudera logo is displayed in a bold, orange, sans-serif font. The word "CLOUDERA" is written in all capital letters. The letter 'E' is stylized with three horizontal bars, giving it a unique, blocky appearance.

Legal Notice

© Cloudera Inc. 2025. All rights reserved.

The documentation is and contains Cloudera proprietary information protected by copyright and other intellectual property rights. No license under copyright or any other intellectual property right is granted herein.

Unless otherwise noted, scripts and sample code are licensed under the Apache License, Version 2.0.

Copyright information for Cloudera software may be found within the documentation accompanying each component in a particular release.

Cloudera software includes software from various open source or other third party projects, and may be released under the Apache Software License 2.0 (“ASLv2”), the Affero General Public License version 3 (AGPLv3), or other license terms. Other software included may be released under the terms of alternative open source licenses. Please review the license and notice files accompanying the software for additional licensing information.

Please visit the Cloudera software product page for more information on Cloudera software. For more information on Cloudera support services, please visit either the Support or Sales page. Feel free to contact us directly to discuss your specific needs.

Cloudera reserves the right to change any products at any time, and without notice. Cloudera assumes no responsibility nor liability arising from the use of products, except as expressly agreed to in writing by Cloudera.

Cloudera, Cloudera Altus, HUE, Impala, Cloudera Impala, and other Cloudera marks are registered or unregistered trademarks in the United States and other countries. All other trademarks are the property of their respective owners.

Disclaimer: EXCEPT AS EXPRESSLY PROVIDED IN A WRITTEN AGREEMENT WITH CLOUDERA, CLOUDERA DOES NOT MAKE NOR GIVE ANY REPRESENTATION, WARRANTY, NOR COVENANT OF ANY KIND, WHETHER EXPRESS OR IMPLIED, IN CONNECTION WITH CLOUDERA TECHNOLOGY OR RELATED SUPPORT PROVIDED IN CONNECTION THEREWITH. CLOUDERA DOES NOT WARRANT THAT CLOUDERA PRODUCTS NOR SOFTWARE WILL OPERATE UNINTERRUPTED NOR THAT IT WILL BE FREE FROM DEFECTS NOR ERRORS, THAT IT WILL PROTECT YOUR DATA FROM LOSS, CORRUPTION NOR UNAVAILABILITY, NOR THAT IT WILL MEET ALL OF CUSTOMER’S BUSINESS REQUIREMENTS. WITHOUT LIMITING THE FOREGOING, AND TO THE MAXIMUM EXTENT PERMITTED BY APPLICABLE LAW, CLOUDERA EXPRESSLY DISCLAIMS ANY AND ALL IMPLIED WARRANTIES, INCLUDING, BUT NOT LIMITED TO IMPLIED WARRANTIES OF MERCHANTABILITY, QUALITY, NON-INFRINGEMENT, TITLE, AND FITNESS FOR A PARTICULAR PURPOSE AND ANY REPRESENTATION, WARRANTY, OR COVENANT BASED ON COURSE OF DEALING OR USAGE IN TRADE.

Contents

Cloudera Management Console..... 4

Cloudera on premises Interfaces..... 5

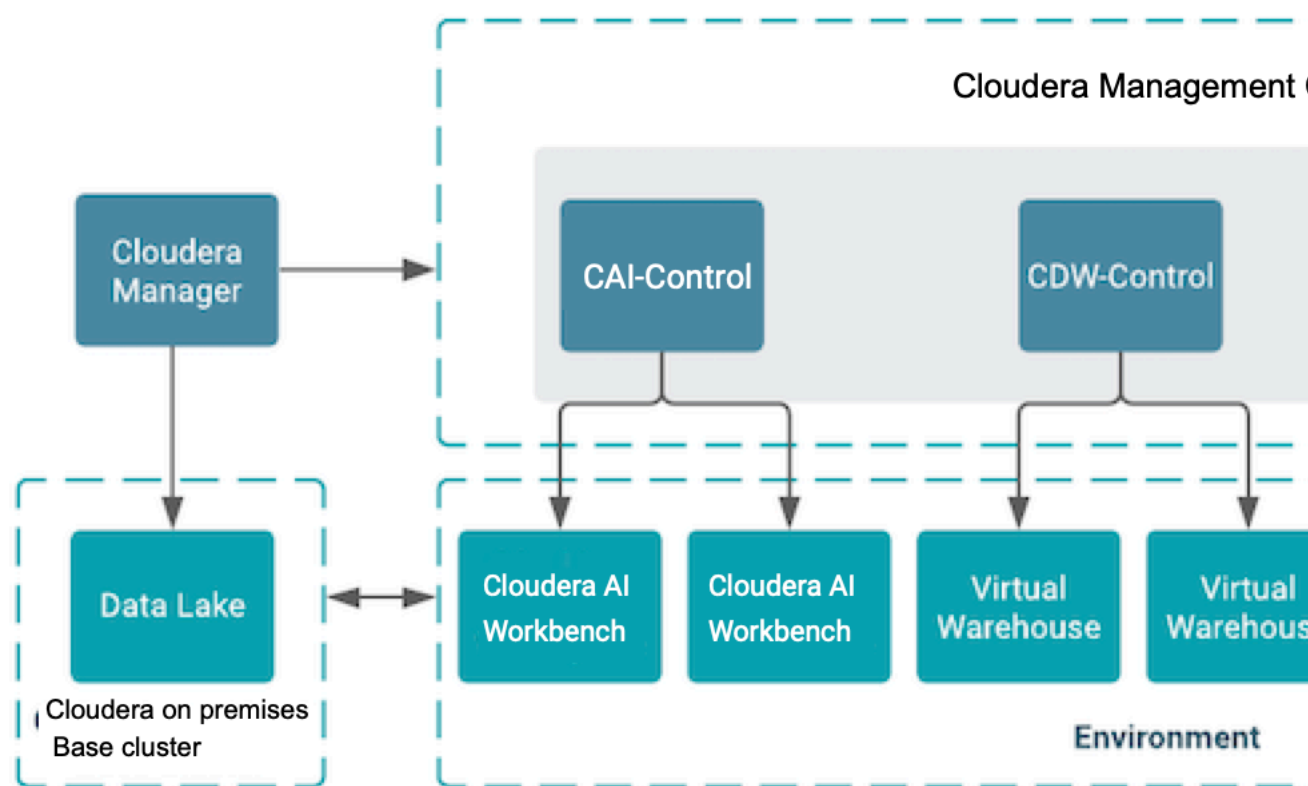
Cloudera Management Console

The Cloudera Management Console is a service used by Cloudera administrators to manage environments, users, and services.

The Cloudera Management Console allows you to:

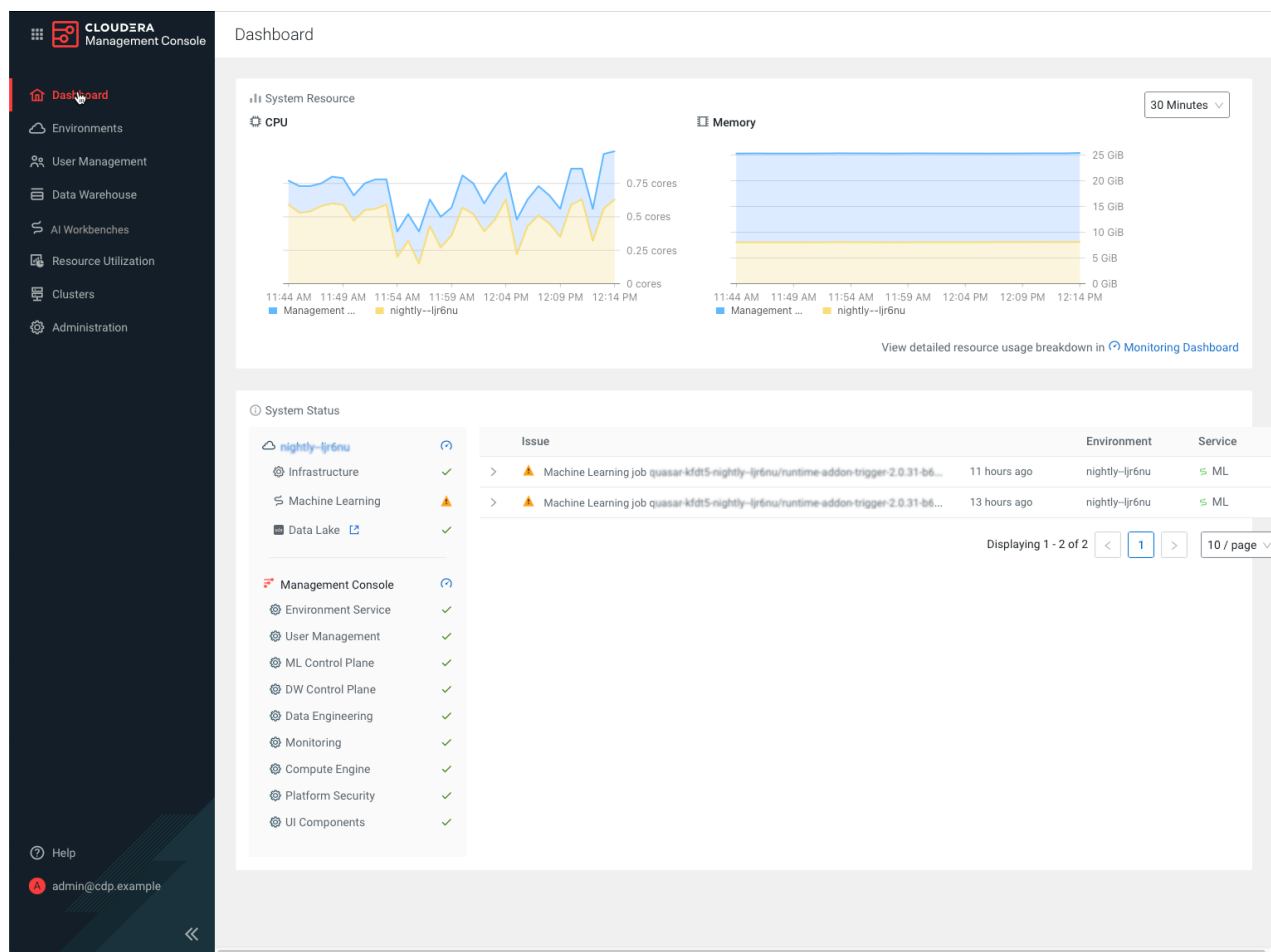
- Enable user access to Cloudera Data Services on premises, onboard and set up authentication for users, and determine access rights for the various users to the available resources.
- Register an Environment, which represents the association of your user account with compute resources, where you can manage and provision workloads such as Cloudera Data Warehouse, Cloudera AI, and Cloudera Data Engineering. When registering the Environment, you must specify a Data Lake residing on the Cloudera Base on premises cluster to provide security and governance for the workloads.
- View information about the resources consumed by the workloads for an environment.
- Collect diagnostic information from the services for troubleshooting purposes.

The following diagram shows a basic architectural overview of the Cloudera Management Console on



premises:

Figure 1: Cloudera Management Console



Related Information

[Cloudera Data Warehouse](#)

[Cloudera AI](#)

[Cloudera Data Engineering](#)

[Replication Manager](#)

Cloudera on premises Interfaces

You can access and use Cloudera on premises services with the web interface.

Web interface

The Cloudera web interface provides a web-based, graphical user interface. As an admin user, you can use the web interface to register environments, manage users, and provision Cloudera service resources for end users. As an end user, you can use the web console to access Cloudera service web interfaces to perform data engineering or data analytics tasks.

CDP CLI

If you prefer to work in a terminal window, you can download and configure the CDP client that gives you access to the CDP CLI tool. The CDP CLI allows you to perform the same actions as can be performed from the Cloudera Management Console.