

Sheets

Date published: 2020-10-30

Date modified: 2025-09-30

CLOUDERA

Legal Notice

© Cloudera Inc. 2025. All rights reserved.

The documentation is and contains Cloudera proprietary information protected by copyright and other intellectual property rights. No license under copyright or any other intellectual property right is granted herein.

Unless otherwise noted, scripts and sample code are licensed under the Apache License, Version 2.0.

Copyright information for Cloudera software may be found within the documentation accompanying each component in a particular release.

Cloudera software includes software from various open source or other third party projects, and may be released under the Apache Software License 2.0 (“ASLv2”), the Affero General Public License version 3 (AGPLv3), or other license terms. Other software included may be released under the terms of alternative open source licenses. Please review the license and notice files accompanying the software for additional licensing information.

Please visit the Cloudera software product page for more information on Cloudera software. For more information on Cloudera support services, please visit either the Support or Sales page. Feel free to contact us directly to discuss your specific needs.

Cloudera reserves the right to change any products at any time, and without notice. Cloudera assumes no responsibility nor liability arising from the use of products, except as expressly agreed to in writing by Cloudera.

Cloudera, Cloudera Altus, HUE, Impala, Cloudera Impala, and other Cloudera marks are registered or unregistered trademarks in the United States and other countries. All other trademarks are the property of their respective owners.

Disclaimer: EXCEPT AS EXPRESSLY PROVIDED IN A WRITTEN AGREEMENT WITH CLOUDERA, CLOUDERA DOES NOT MAKE NOR GIVE ANY REPRESENTATION, WARRANTY, NOR COVENANT OF ANY KIND, WHETHER EXPRESS OR IMPLIED, IN CONNECTION WITH CLOUDERA TECHNOLOGY OR RELATED SUPPORT PROVIDED IN CONNECTION THEREWITH. CLOUDERA DOES NOT WARRANT THAT CLOUDERA PRODUCTS NOR SOFTWARE WILL OPERATE UNINTERRUPTED NOR THAT IT WILL BE FREE FROM DEFECTS NOR ERRORS, THAT IT WILL PROTECT YOUR DATA FROM LOSS, CORRUPTION NOR UNAVAILABILITY, NOR THAT IT WILL MEET ALL OF CUSTOMER’S BUSINESS REQUIREMENTS. WITHOUT LIMITING THE FOREGOING, AND TO THE MAXIMUM EXTENT PERMITTED BY APPLICABLE LAW, CLOUDERA EXPRESSLY DISCLAIMS ANY AND ALL IMPLIED WARRANTIES, INCLUDING, BUT NOT LIMITED TO IMPLIED WARRANTIES OF MERCHANTABILITY, QUALITY, NON-INFRINGEMENT, TITLE, AND FITNESS FOR A PARTICULAR PURPOSE AND ANY REPRESENTATION, WARRANTY, OR COVENANT BASED ON COURSE OF DEALING OR USAGE IN TRADE.

Contents

Creating a new sheet.....	4
Adding visuals to a sheet.....	4
Adding a filter to a sheet.....	7
Renaming a sheet.....	11
Reordering sheets.....	12
Reordering sheet IDs to match positions.....	15
Cloning a sheet.....	16
Cloning an internal sheet in a dashboard.....	16
Cloning an external sheet in a dashboard.....	18
Downloading a sheet.....	21
Downloading a dashboard sheet as a PNG file.....	21
Downloading current sheet as a PDF file.....	23
Downloading all sheets as one PDF file.....	24
Downloading current sheet as a PDF file with each visual on a separate page.....	27
Emailing sheets.....	30
Deleting a sheet.....	32

Creating a new sheet

Cloudera Data Visualization enables you to create and customize sheets within your dashboards.


Procedure

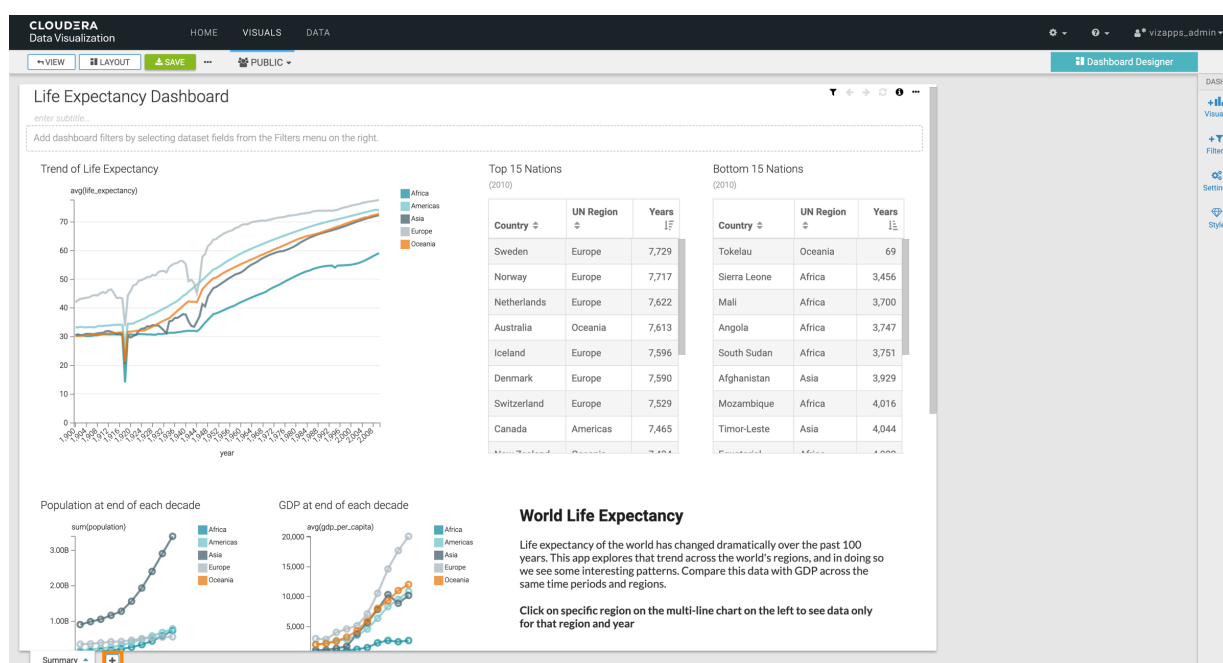
1. Open a dashboard of your choice in Edit mode.

If you are creating a new dashboard, the default single sheet already contains a basic table visual based on the initial dataset.



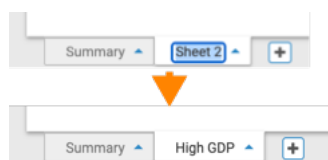
Note: Save the dashboard before proceed with adding a new sheet.

2. Navigate to the bottom left corner of the interface and click the  icon next to the tab of the existing sheet.



Cloudera Data Visualization generates a new, empty sheet, titled Sheet 2. The sheet title is automatically highlighted, allowing you to assign a more descriptive name.

3. Change the name of the sheet. In this example, Sheet 2 is renamed to High GDP.



4. Click SAVE to ensure that all changes are saved to the dashboard.

What to do next

Start building out the new sheet by adding filters and visuals.

Adding visuals to a sheet

Cloudera Data Visualization enables you to add visuals to a sheet.

Procedure

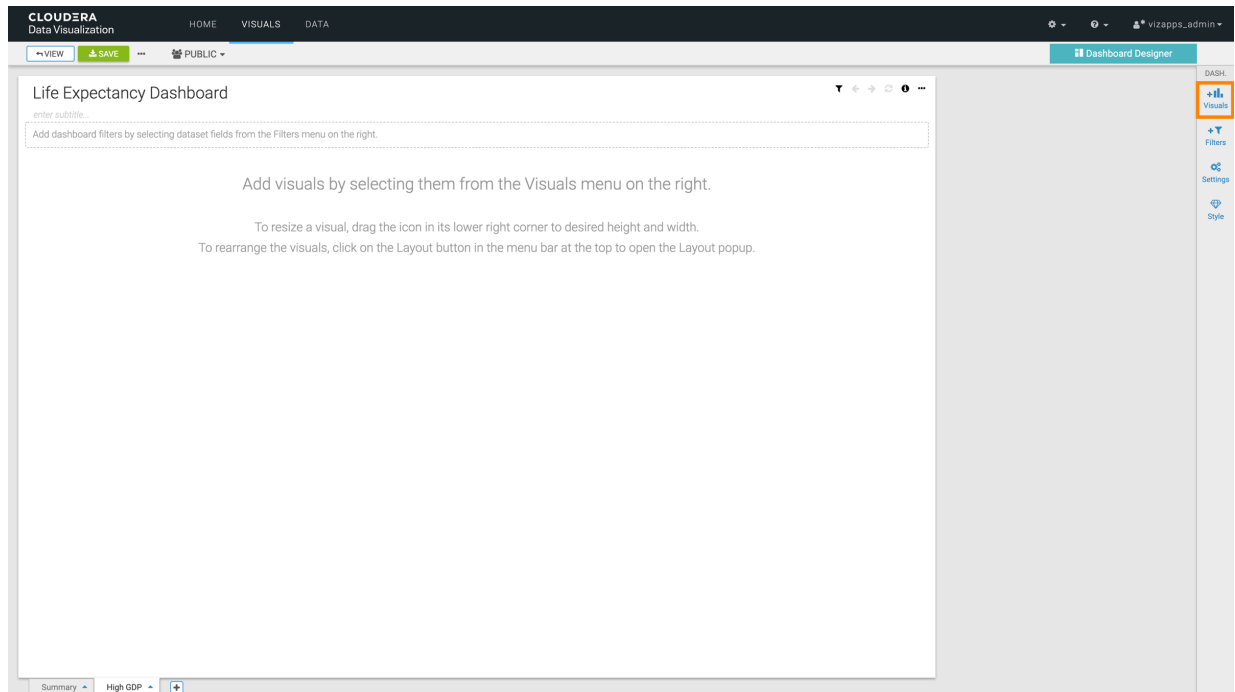
1. Open a dashboard of your choice in Edit mode.
2. Choose the specific sheet in the dashboard where you want to add visuals.



Note: If you are working with a new dashboard, it has a single sheet by default.

This examples works with a sheet called High GDP.

3. In the Visual Builder side menu bar on the right, select Visuals.



4. In the Visuals menu, configure the visual settings as needed.

You can set the following:

The screenshot shows the 'VISUALS' panel in Cloudera Data Visualization. On the left, there are six annotations with orange circles and arrows pointing to specific elements in the panel:

- Use recent visual (a)**: Points to the 'Recently Viewed Visuals' section, which lists 'Total GDP', 'Compare GDP', and 'GDP > 25K, North Europe'.
- Change connection (b)**: Points to the 'samples' dropdown menu.
- Change dataset (c)**: Points to the 'World Life Expectancy' dropdown menu.
- Create new visual (d)**: Points to the green 'NEW VISUAL' button.
- Add a linked visual (e)**: Points to the 'Compare GDP' visual card.
- Add an existing visual (f)**: Points to the 'World Population - Highlight Marks on Dual Bar and Area' visual card.

a. Recently Viewed Visuals

You can quickly access visuals added recently. Click one of the options in the top menu to add a visual to the dashboard sheet.

b. Connection

Change the data connection to access visuals based on different connections and datasets. The Connection dropdown lets you select an alternate connection, affecting the dataset and updating the visuals list. It is available in both the Visuals and Filters menus.

Click the name of the current connection, and select a different connection from the menu. When you change the connection, it changes the dataset to the first one that is available on that connection. This also updates the list of visuals that appear in the lower portion of the menu.



Note: A dashboard can contain visuals from several connections.

c. *Dataset*

Choose a different dataset within the same or different connections. Changing the dataset updates the list of visuals available for addition to the dashboard sheet. This option is available in both Visuals and Filters menus.

Click the name of the current dataset, and select a different dataset from the menu. When you change the dataset, a new set of existing visuals appears in the menu. You can change the source dataset of the visuals that you plan to add to your dashboard sheet. The new dataset may be on the same connection, or on a different connection.



Note: A dashboard can contain visuals from multiple datasets that share the same connection or from different datasets across different connections.

d. *New Visual*

Start a new visual within the dashboard, creating a table visual based on the chosen dataset. You can open this visual in edit mode and make changes by selecting another option from the Visual Catalog, populating the shelves of the visual, and customizing settings, colors, and more.

e. *Linked Visual*

Reuse an existing visual marked as linked. Choose to clone the visual or maintain a link for synchronized changes across dashboards.

1. Click to select a visual that is marked with the (linked) symbol.

Cloudera Data Visualization opens an Add Linked Visual modal window.

2. Choose one of the following options:

- Clone visual option, the default, makes a copy of the linked visual. This new visual can be subsequently changed without affecting the original visual.
- Maintain link option keeps the association; any changes made to the visual in one dashboard appear in all dashboards that feature this same visual.

3. After making your choice, click ADD VISUAL.

f. *Existing Visual*

Access visuals belonging to the specified dataset. You can click visuals to add them to the dashboard sheet. To add a visual that already exists in this dashboard and appears on another sheet, click the icon that represents this visual.

5. Click SAVE to save all changes to the sheet.

What to do next

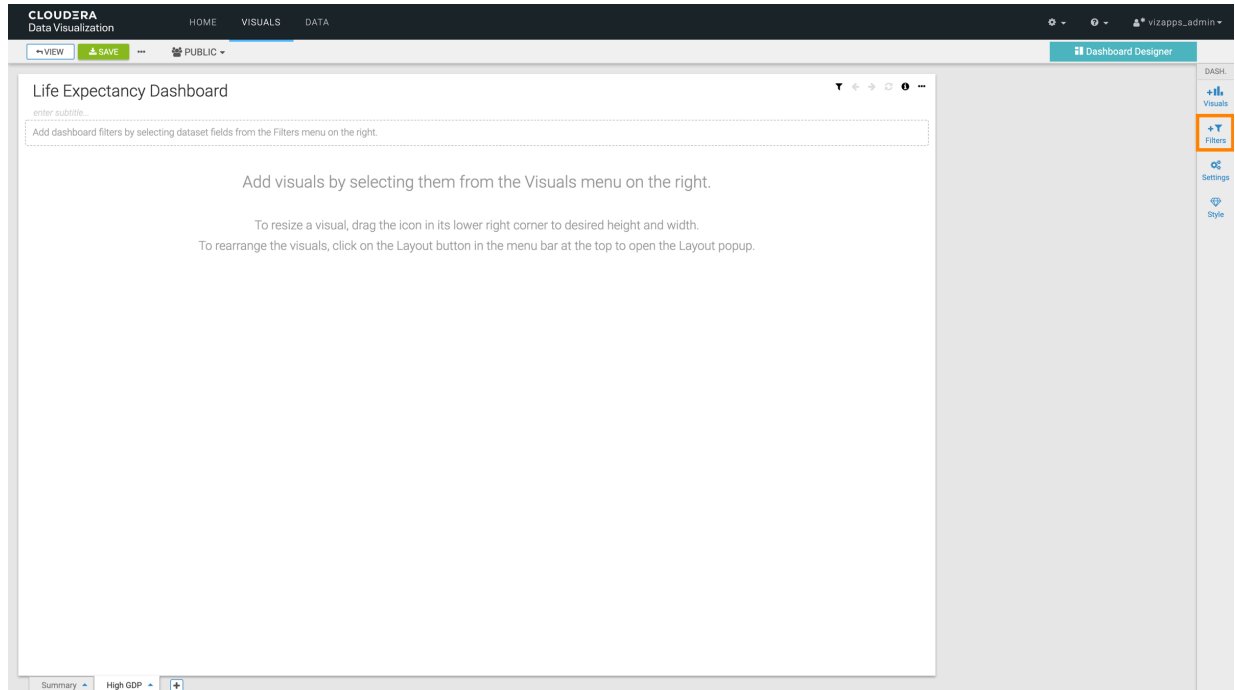
To further enhance the dashboard sheet, consider adding filters. For instructions, see *Adding filters to a sheet*.

Adding a filter to a sheet

Cloudera Data Visualization enables you to add filters to a sheet.

Procedure

1. Open a dashboard of your choice in Edit mode.
2. Choose a sheet in the dashboard where you plan to add visuals.
In this example, a sheet called High GDP is used.
3. Select Filters in the Dashboard Designer side menu bar on the right.



4. In the ADD FILTERS menu, configure your filter as you need.

You can set the following options:



a. Custom Filter

Click CREATE CUSTOM FILTER at the top of the Filters menu.

Cloudera Data Visualization adds a new filter to the filter area of the sheet. If you click the gear icon on the filter, the Settings window modal is displayed, where you can name the new filter and specify its value options, data handling, display, scope, and custom styling.

For information on new dashboard-specific filter scope options, see *Configuring scope of dashboard filters*.

b. Connection

Cloudera Data Visualization supports access to multiple data sources in the same dashboard, so you can change the connection to access visuals based on different connections and dataset.

Click the name of the current connection, and select a different connection from the menu. When you change the connection, note that it changes the dataset to the first one that is available on that connection. This also updates the list of visuals that appear on the lower portion of the menu.

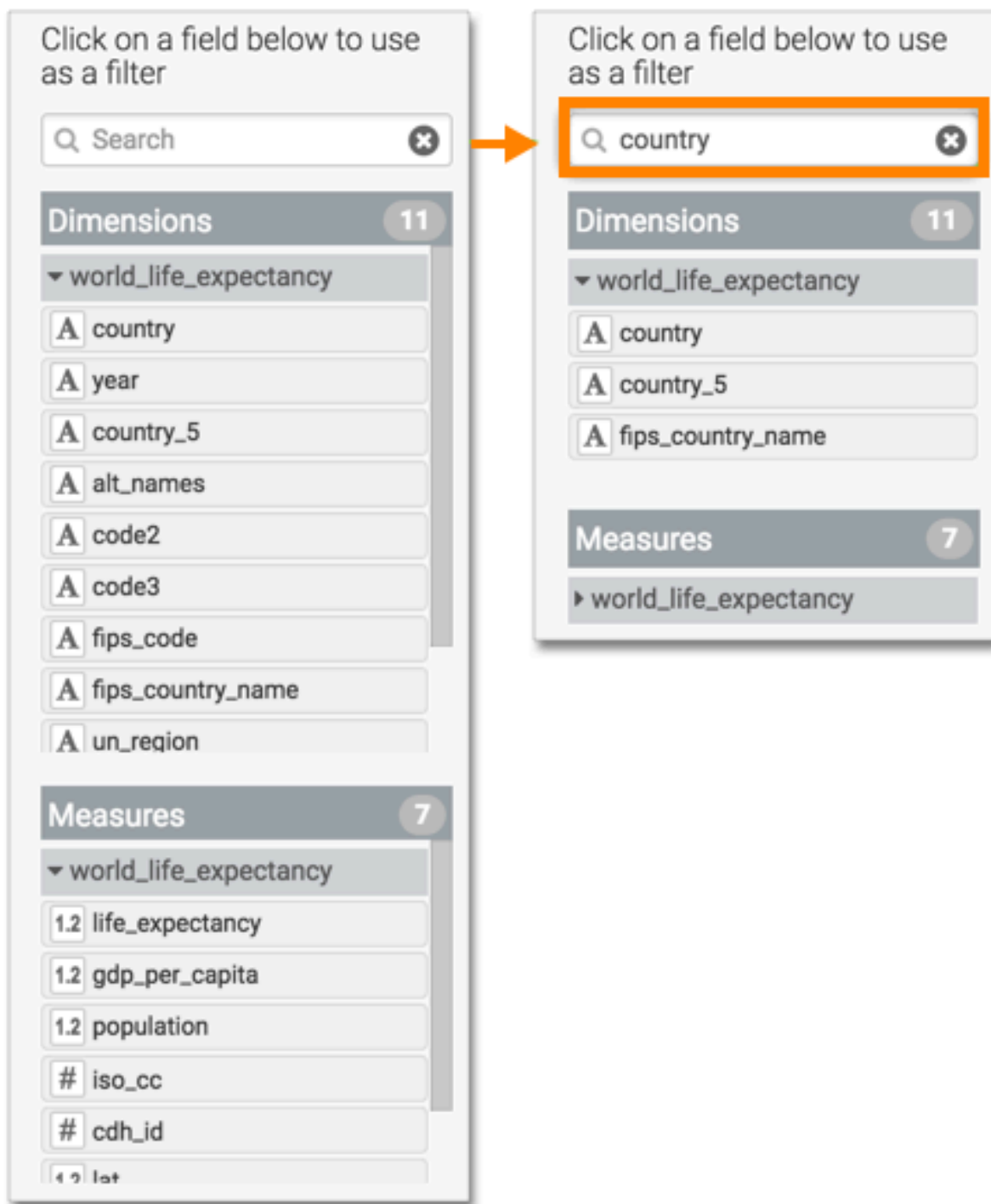
c. Dataset

You can change the source dataset of the visuals that you plan to add to your dashboard sheet. The new dataset may be on the same connection, or on a different connection.

Click the name of the current dataset, and select a different dataset from the menu. This also updates the list of visuals that appear on the lower portion of the menu.

d. Search

For datasets built on very wide tables, this option helps you find the base field for your filter.



e. Field Filter

Clicking one of the fields in either Dimensions or Measures adds a basic filter based on that field into the filter area of the interface. Alternatively, you can also drag the field that you want to use as a filter and drop it into the filter bar on the sheet.

In this example, the filter country has been added. You can use it directly, or open the Settings menu, where you can rename the filter and specify its value options, data handling, display, scope, and custom styling.

f. Field Groups

For ease of viewing, you can collapse or expand the list of fields in either Dimensions, Measures, or both.


Additionally, datasets that represent two or more joined tables group the fields of each table separately.

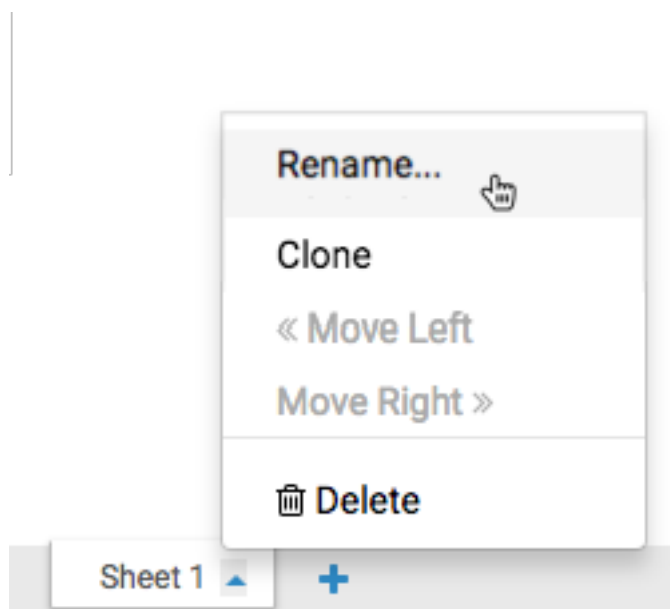
Clicking the name of the table under Dimensions or Measures toggles between expanding the list of these fields.

Renaming a sheet

Cloudera Data Visualization enables you to rename sheets to provide context and make it easier to identify the content of each sheet within the dashboard.

Procedure

1. Open a dashboard of your choice in Edit mode.
By default, each dashboard contains a single sheet, named Sheet 1.
2. At the bottom left corner of the interface, click the  icon next to the name of the sheet.
3. In the sheet management menu, click Rename.



The sheet title becomes editable.

4. Type the new name and either press enter/return on the keyboard, or click outside the sheet name space.

In this example, the name of the sheet changes from Sheet 1 to High GDP.



5. Click SAVE to save all changes to the dashboard.

Alternatively, you can double-click the name of the sheet to change it in Edit mode.

To preview the changes at runtime, click VIEW.

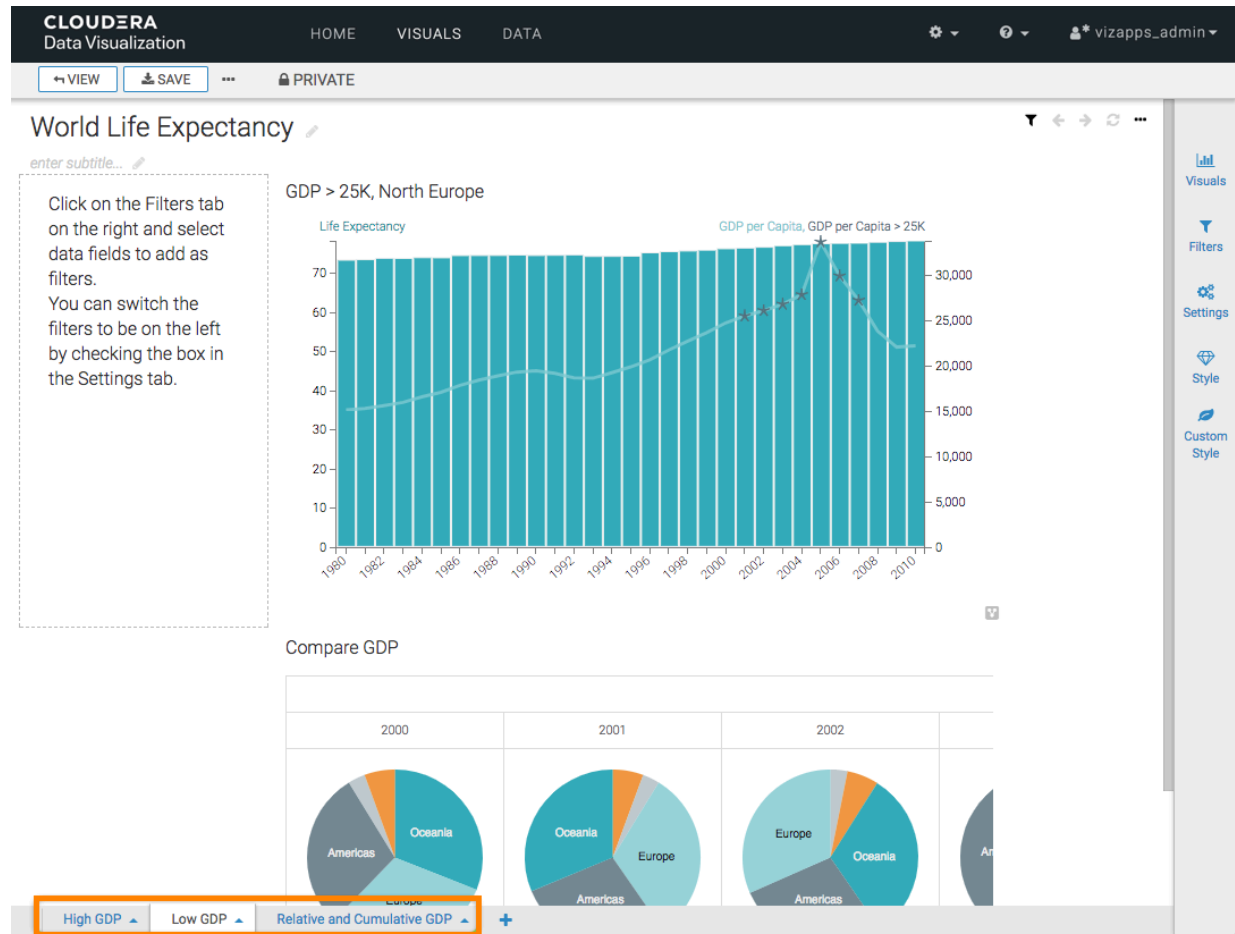
Reordering sheets

Cloudera Data Visualization enables you to move and reorder sheets within a dashboard.

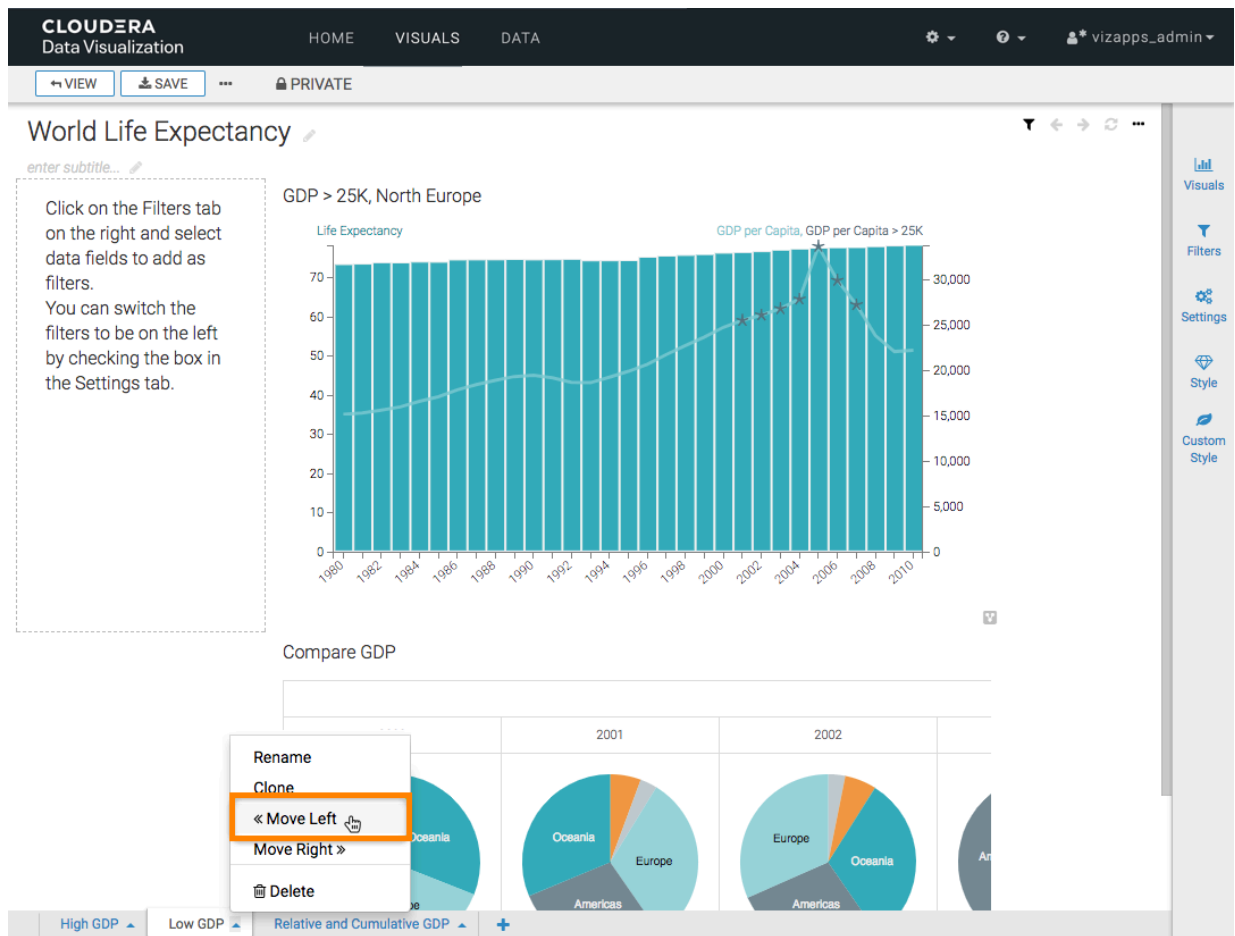
Procedure

1. Open the dashboard in Edit mode.
2. Select the sheet you want to move by clicking on its tab, at the bottom left corner of the interface.

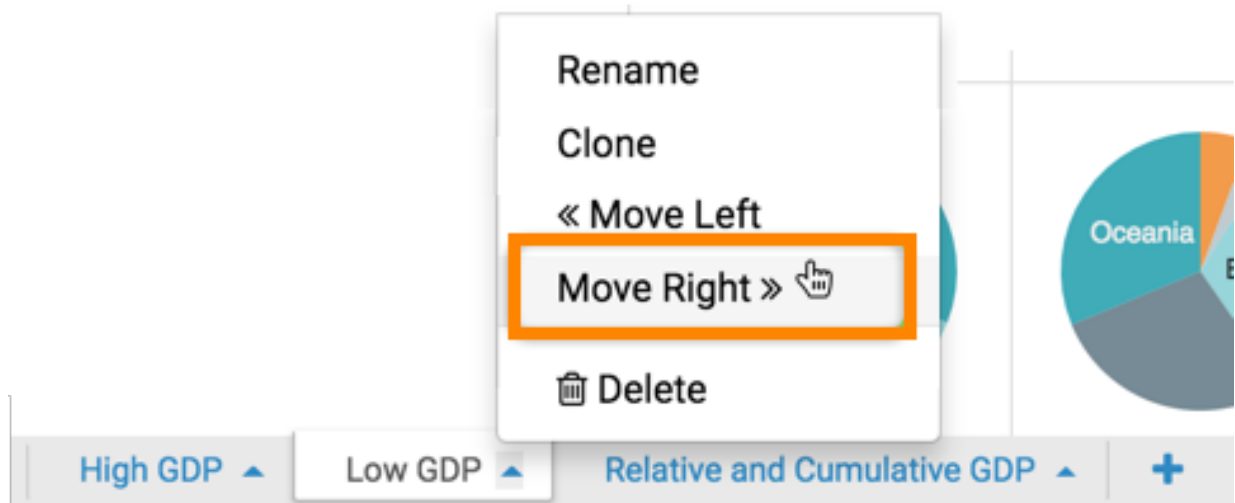
In this example, the sheet Low GDP is chosen, the second of three sheets of the dashboard.



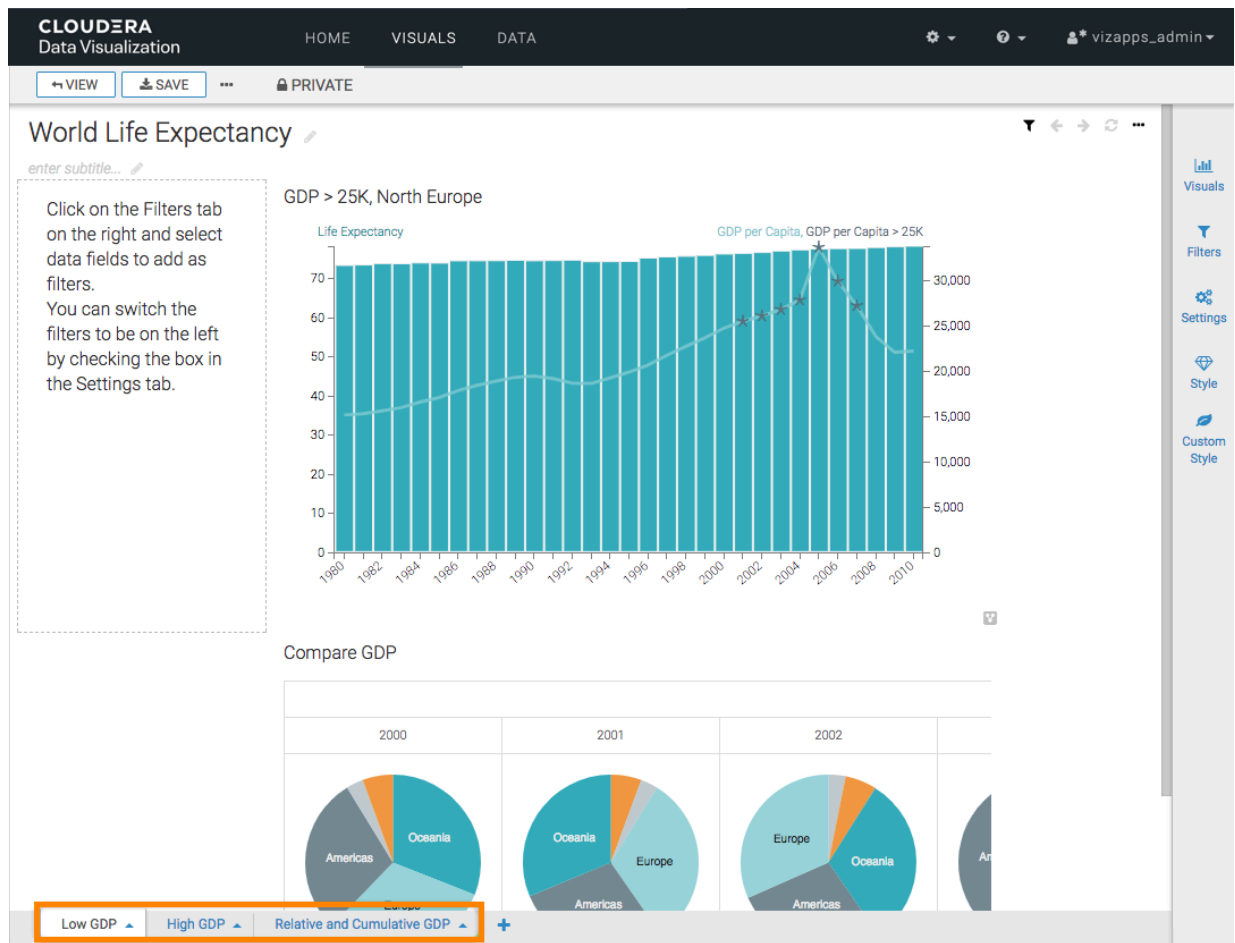
3. To move a sheet to the left, click the (up arrow) icon next to the title of the sheet, and choose the Move Left option.



Similarly, if you wanted to move the sheet to the right instead, choose the Move Right option.



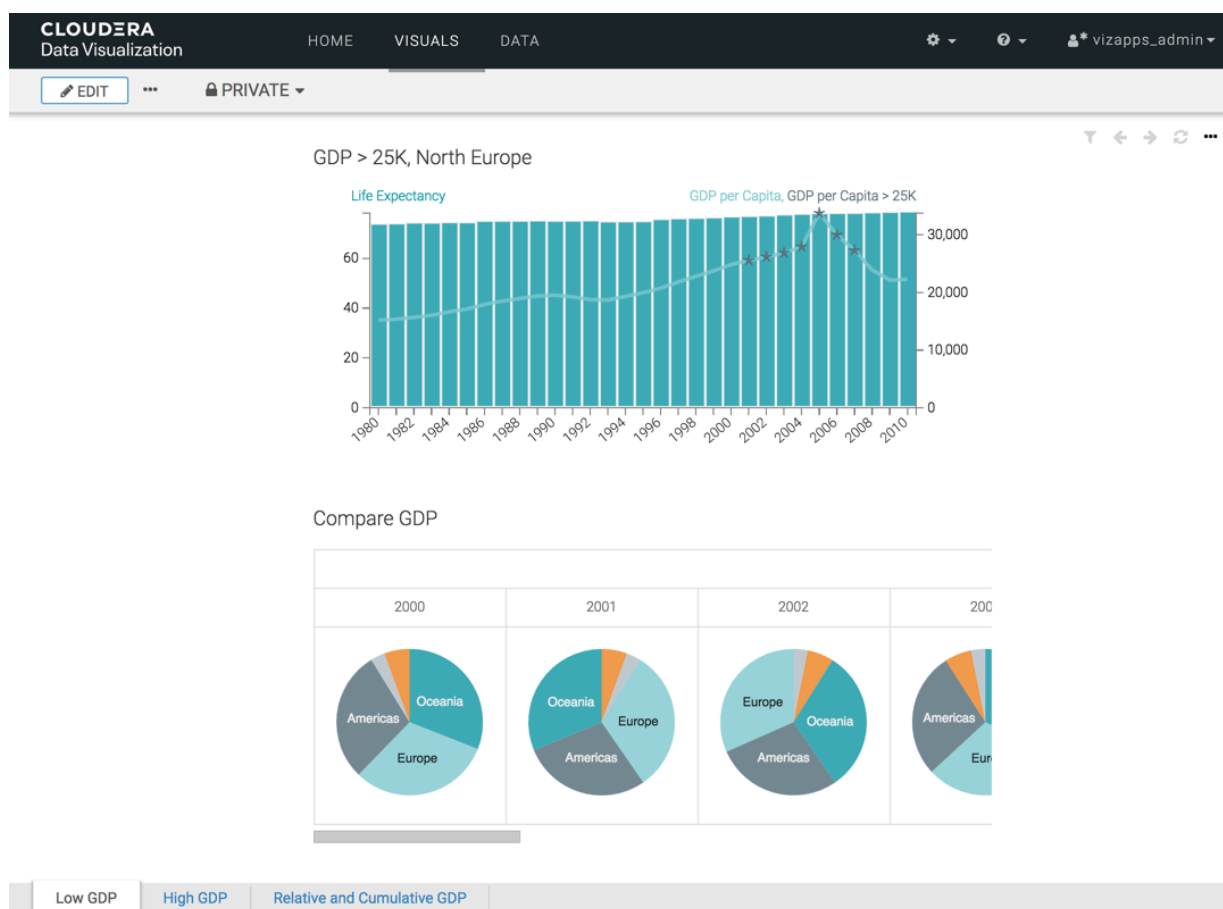
The dashboard moves to the extreme left, or the first sheet in the dashboard.



- Click SAVE to save all changes to the dashboard.

- To see how the dashboard appears at runtime and to confirm that the order of sheets is correct, click VIEW.

In this example, the order of sheets in the dashboard is just like intended.



Reordering sheet IDs to match positions

Cloudera Data Visualization allows you to reassign the sheet IDs based on their new order within the dashboard after reordering or deleting sheets. This ensures consistency between sheet IDs and the display order of the actual sheets.



About this task

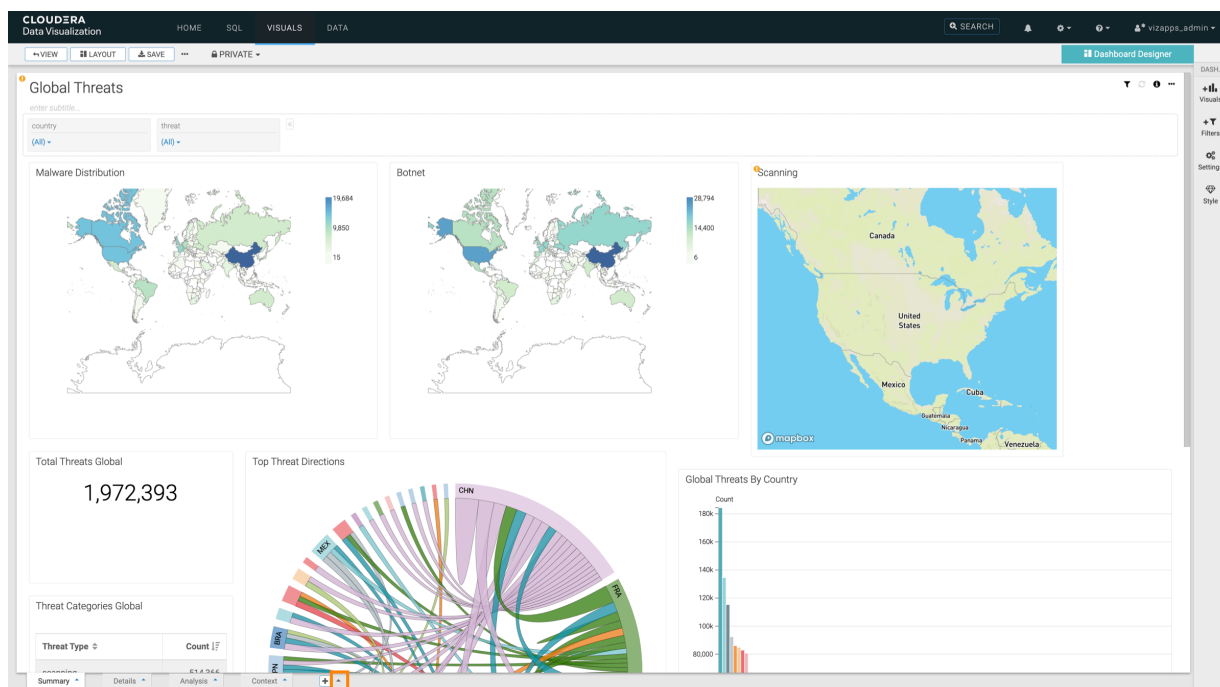
In addition to their names, each sheet in the dashboard has a unique identifier, which is visible in the sheet's URL. This unique ID helps you to easily differentiate between various sheets within the dashboard.

The IDs are assigned based on the original order of the sheets. When sheets are repositioned or removed, the ID sequence can lose alignment with the current sheet order. To maintain a coherent reference system, you can reassign sheet IDs based on their new order.

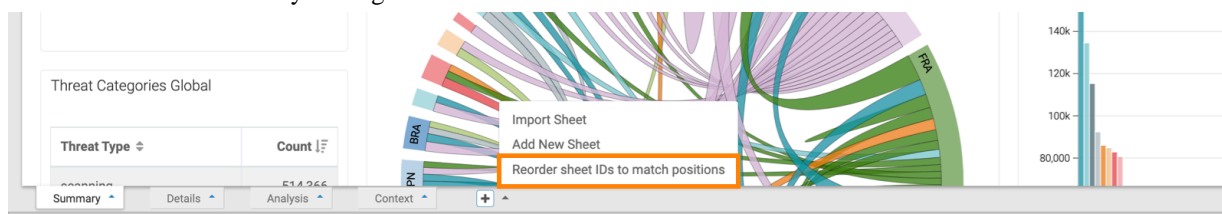
Procedure

- Open the dashboard in Edit mode.

2. Hover over the  icon at the bottom left corner of the Dashboard Designer interface and click the  icon that appears next to it.



3. Select Reorder sheet IDs to match positions from the pop-up menu.
Sheet IDs are automatically reassigned based on the new order of sheets.



4. Click SAVE to save all changes to the dashboard.

Results

The new sheet ID numbering now corresponds to the order of the sheets on the dashboard.

Cloning a sheet

Cloudera Data Visualization enables you to clone a sheet in a dashboard.

You can clone internal and external sheets.

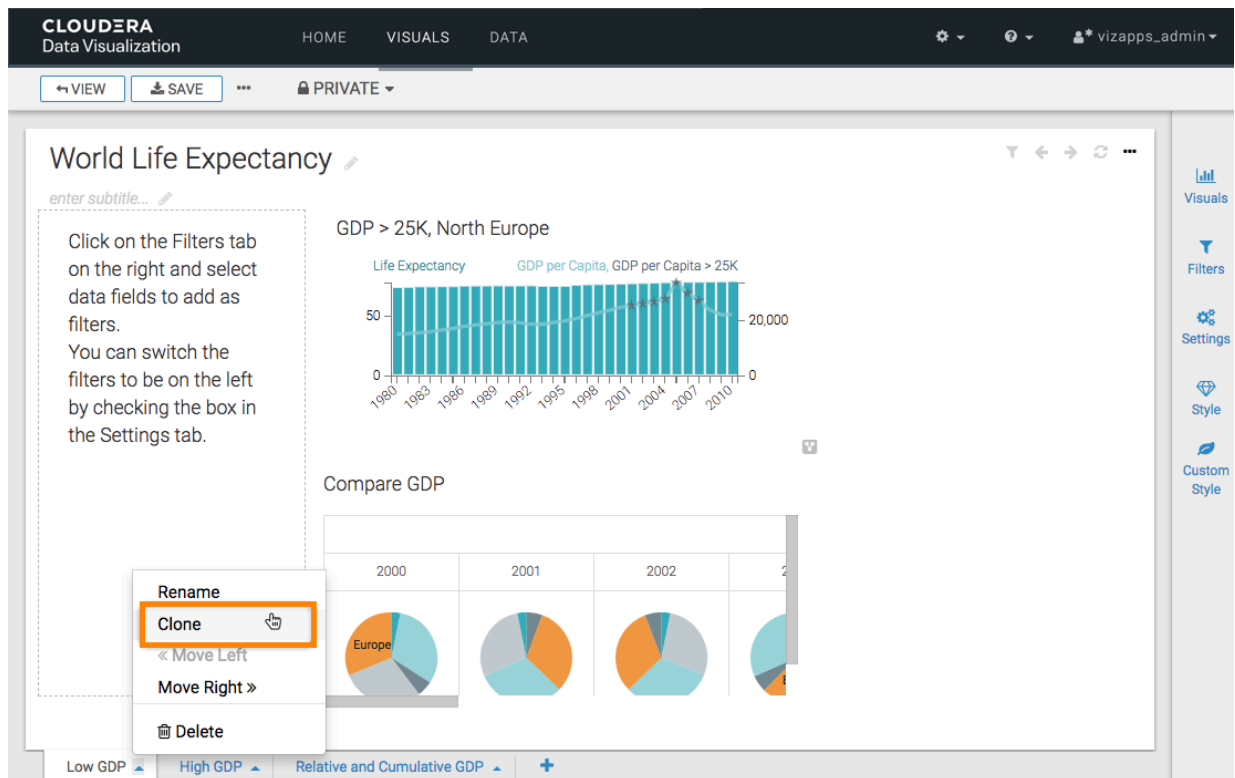
Cloning an internal sheet in a dashboard

In Cloudera Data Visualization, you can clone sheets within a dashboard.

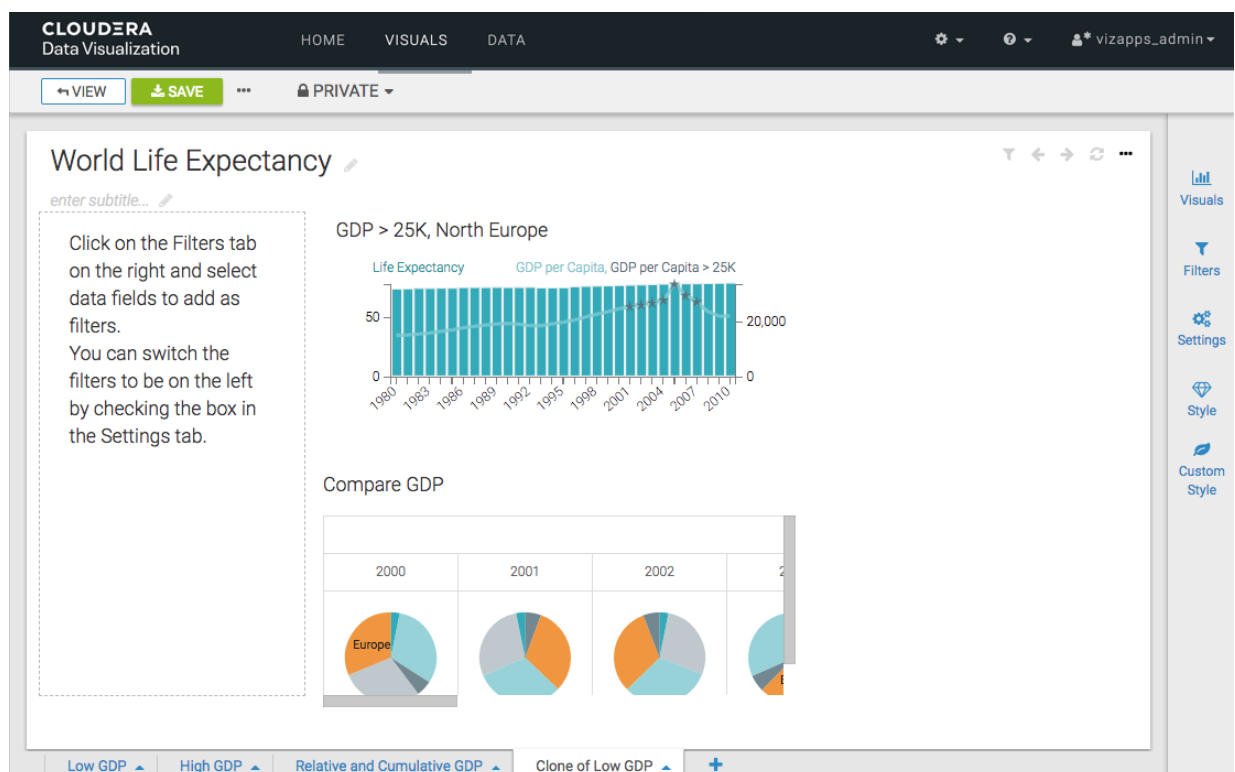
Procedure

1. Open the dashboard in Edit mode.

2. Select the sheet you want to clone by clicking on its tab, at the bottom left corner of the interface.
In this example, the sheet Low GDP is chosen.
3. Click the (up arrow) icon next to the title of the sheet, and choose the Clone option.



Data Vizualization creates a clone of the sheet, and places it on the extreme right.



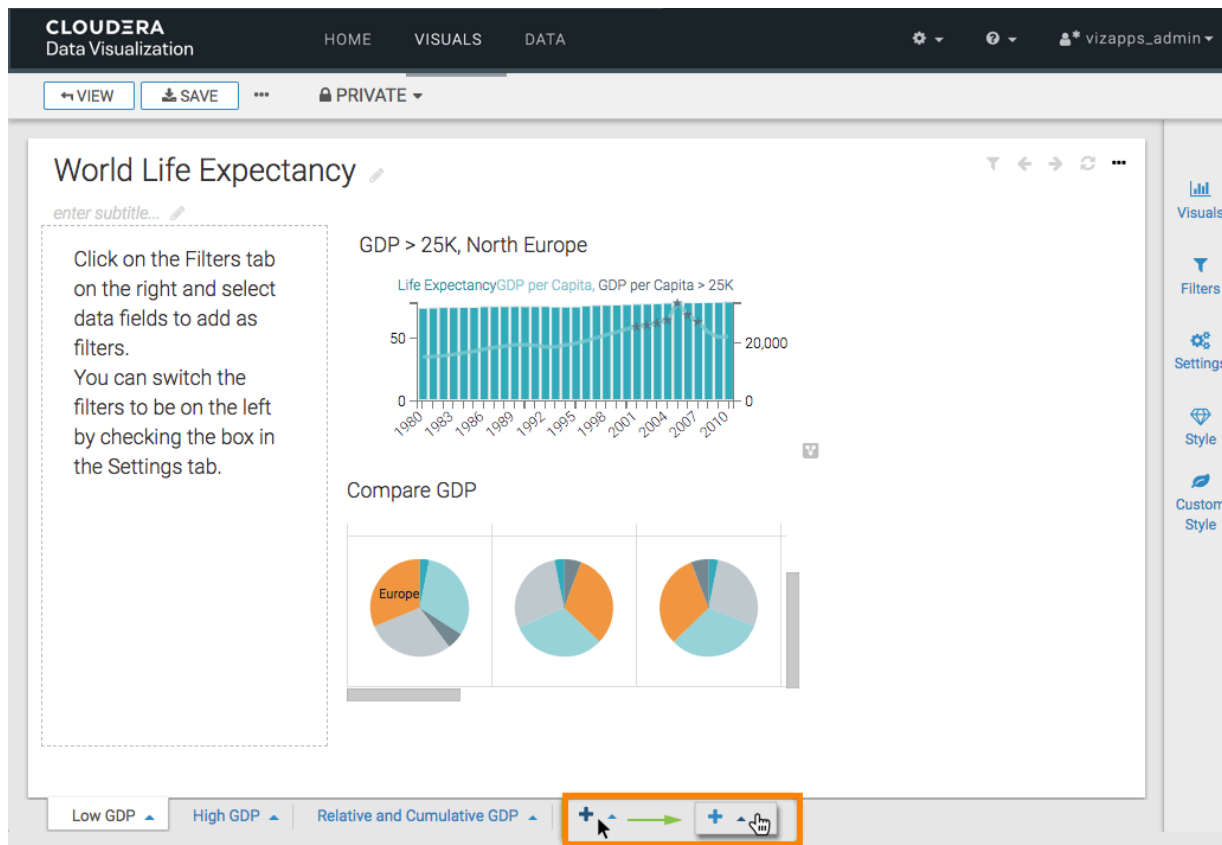
4. Rename the sheet, and click SAVE to save the all changes to the dashboard.

Cloning an external sheet in a dashboard

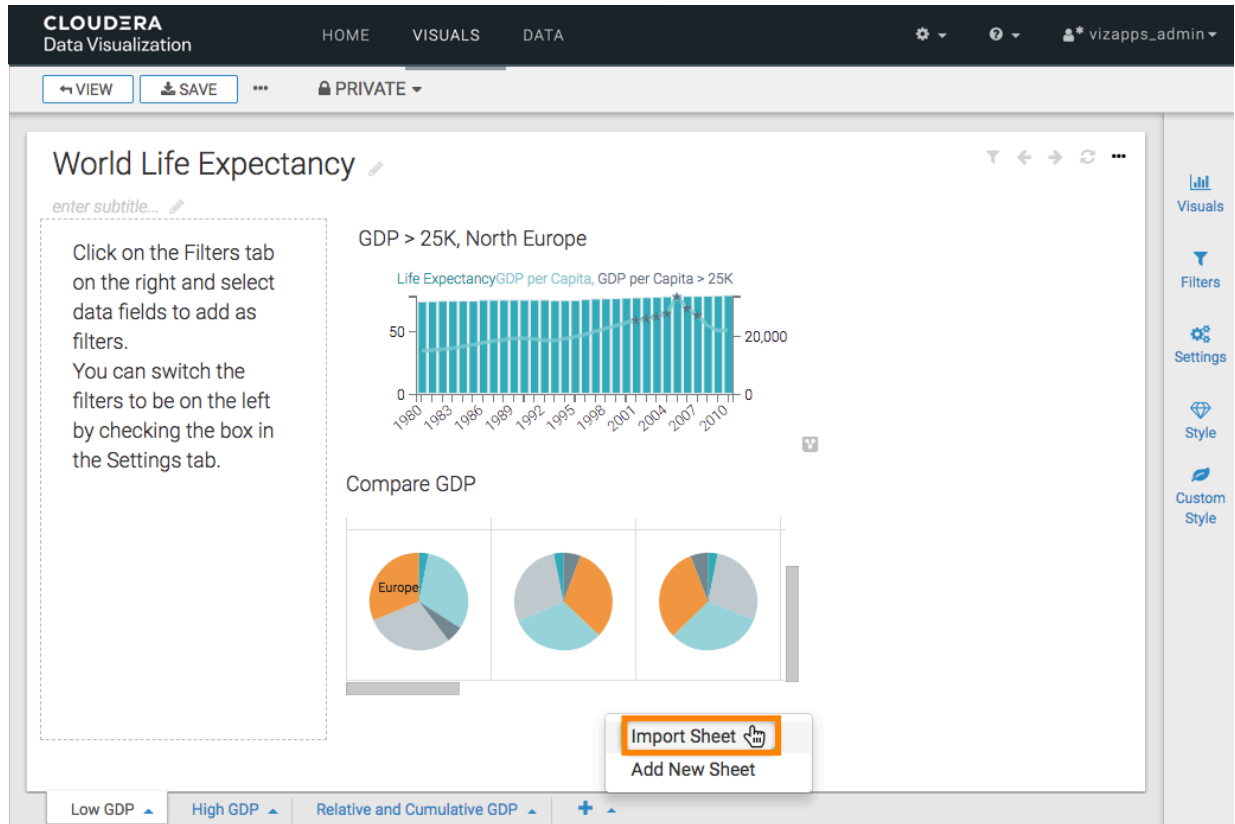
In Cloudera Data Visualization, you can clone a sheet from another dashboard, and import it into your current dashboard.

Procedure

1. Open the dashboard in Edit mode.
2. At the bottom of the interface, hover over the (plus) icon next to the right-most sheet title.
A new widget, the (up) icon, appears to the right of the (plus) icon.
3. Click the (up) icon.

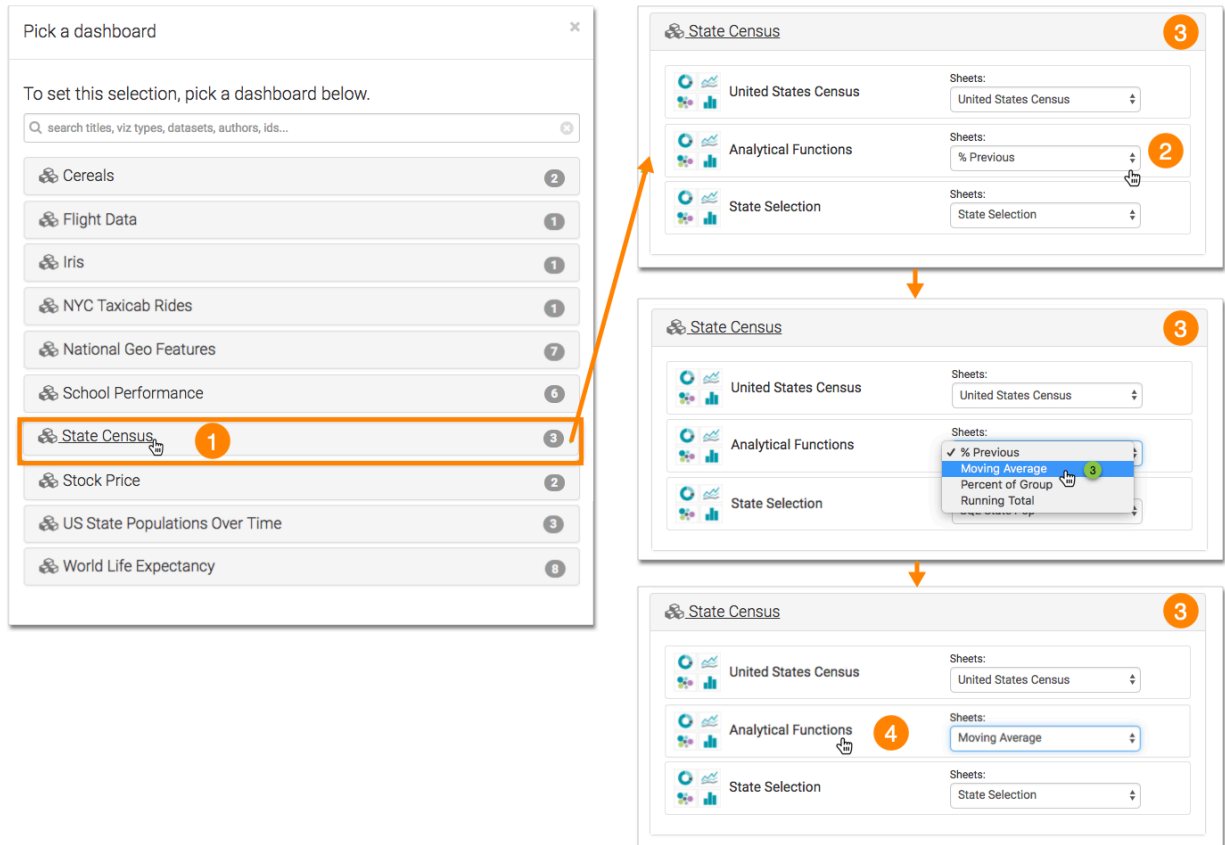


4. In the menu, select Import Sheet.

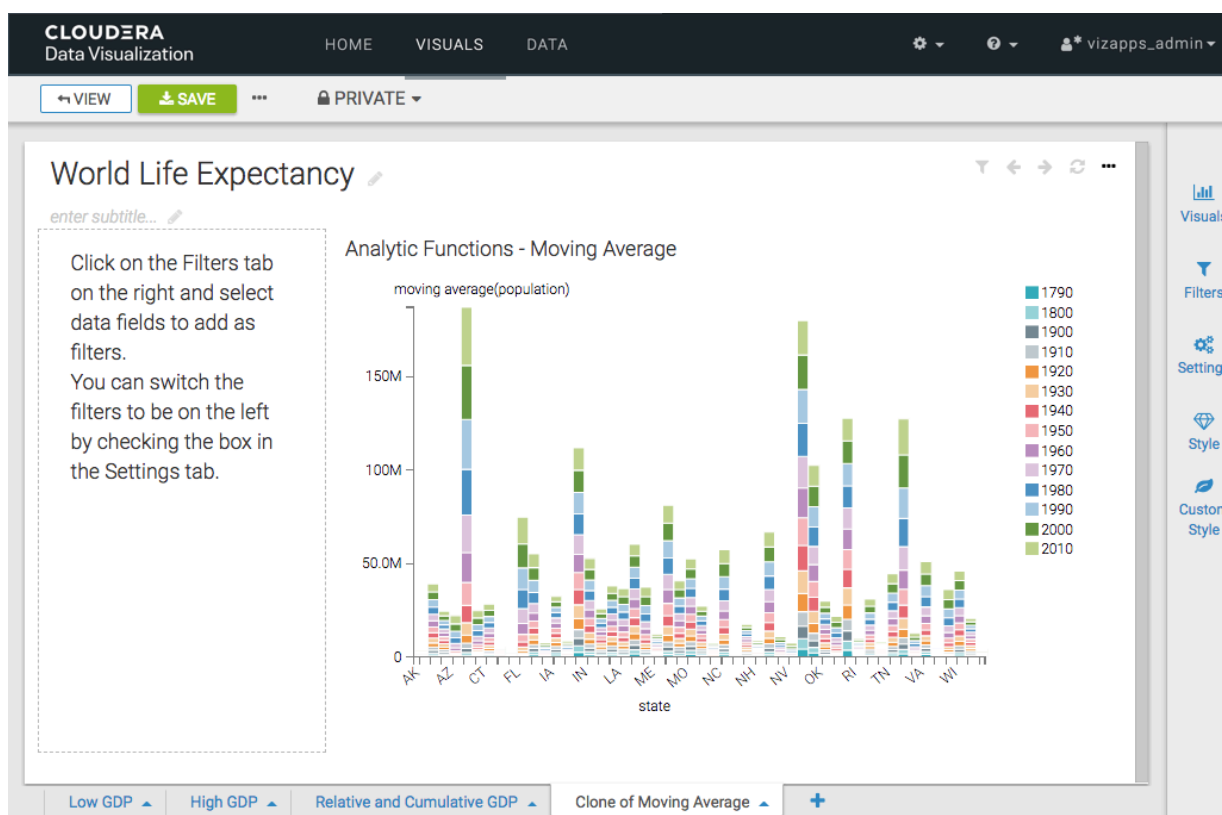


5. In the Pick a dashboard modal window, make the selection in the following manner:

- a. Select the dataset.
- b. Select the dashboard.
- c. Select the particular sheet that you plan to import.
- d. Click the dashboard.



Cloudera Data Visualization creates a clone of the external sheet, and imports it into the dashboard, placing it on the extreme right.



6. Rename the sheet and click SAVE to save the all changes to the dashboard.

Downloading a sheet

Cloudera Data Visualization enables you save the current sheet of a dashboard as a .png file and to download the entire dashboard as a PDF file with each sheet on a separate page.

Downloading a dashboard sheet as a PNG file

Cloudera Data Visualization allows you to download the current sheet of a dashboard as a PNG image for sharing or offline viewing. The name of the exported file reflects the name of the dashboard and includes a timestamp indicating when the file was created.

About this task

Cloudera recommends this built-in download rather than using desktop screenshot tools because this method properly captures visuals that are very wide, very long, or extend beyond the visible screen area.



Note:

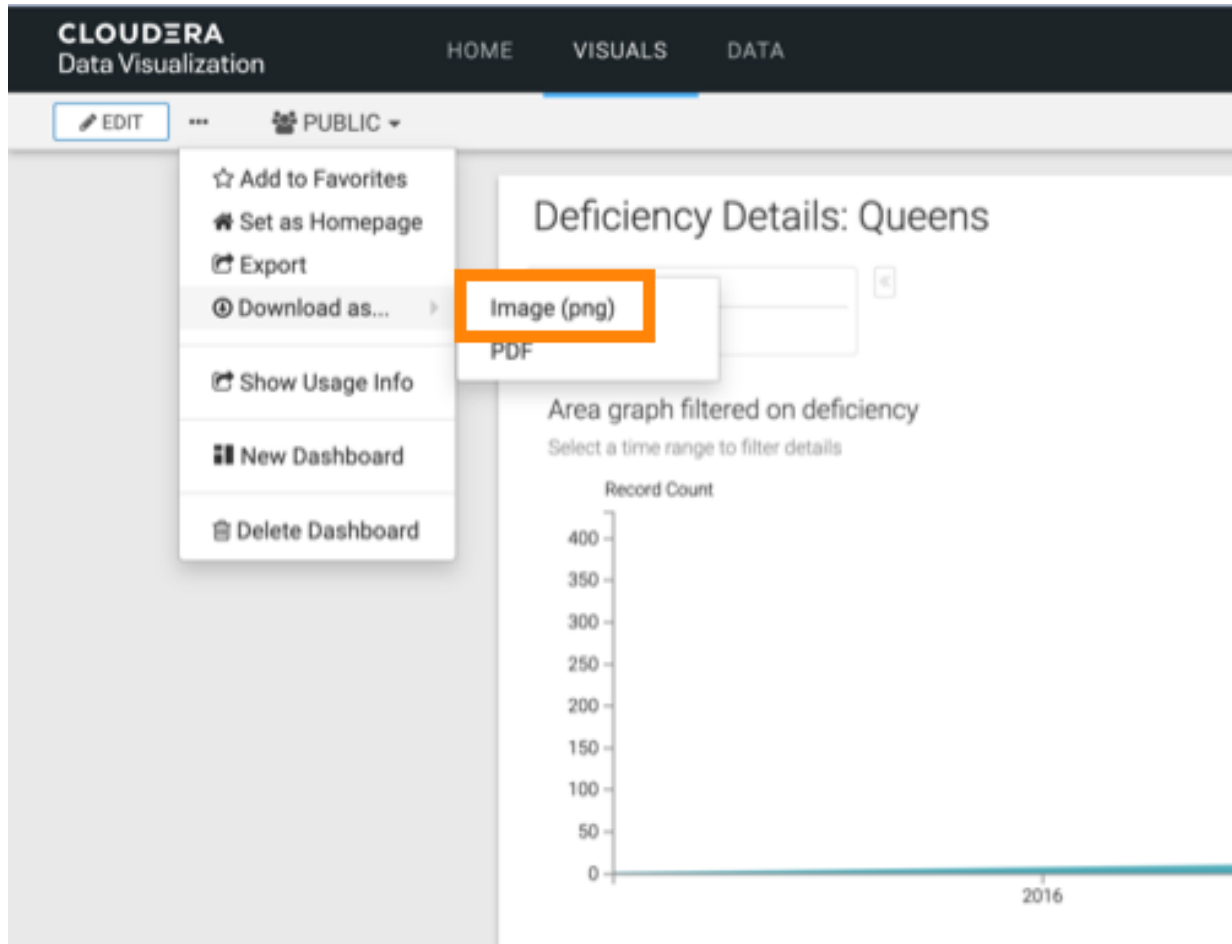
- Custom JavaScript visual snapshots are supported only if written in ECMAScript 5.
- PNG download is not supported on Windows platforms.

Before you begin

Before you download the dashboard as a PNG file, make sure the download feature is enabled in site settings. For instructions, see [Snapshots in Managing dashboard site settings](#).

Procedure

1. In the Dashboard Designer top menu bar, click **...** to open the supplemental menu.
2. Click Download as... Image (png) .



A message appears: Generating the requested file and Cloudera Data Visualization saves the sheet as a PNG file.

You can reach the same action using the **...** icon in the top-right corner of the dashboard.

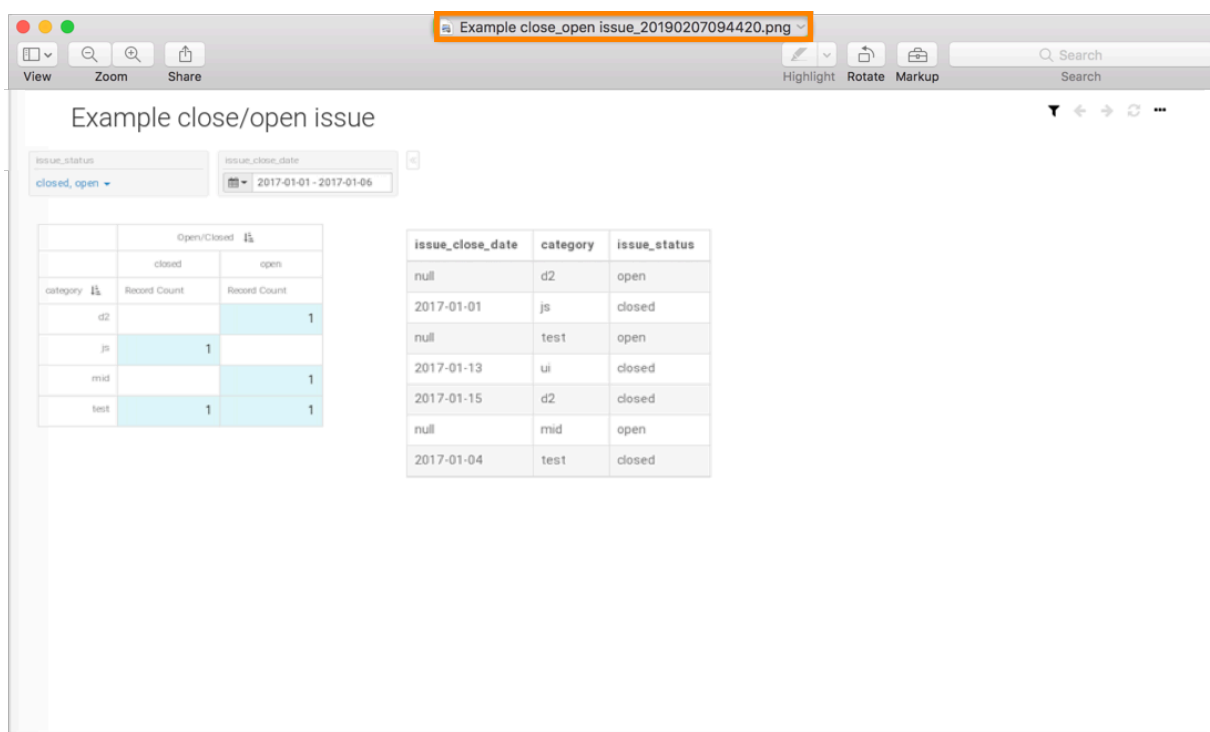
3. When the download is complete, open your browser's default download folder.

For example, the generated filename, Example close_open issue_20250707094420.png, has the following components:

- Example close_open issue: Same name as the dashboard
- 20250707: Date of download in YYYYMMDD format
- 094420: Time of download in hhmmss format

If the dashboard name contains characters not supported by your file system (for example slashes), Cloudera Data Visualization replaces them automatically. For example:

- Original visual name: Example close/open issue
- Generated file name: Example close open issue_xxxxxxxxxxxxx.png (Forward slash / is replaced with a space.)



Downloading current sheet as a PDF file

Cloudera Data Visualization allows you to download the current sheet of a dashboard as a PDF file, with all visuals in the current sheet included on a single page. This is useful for sharing or archiving snapshots of individual sheets.

About this task



Note:

- Custom JavaScript visual snapshots are supported only if written in ECMAScript 5.
- For filtered visuals, the filter must have application (app) scope.
- PDF download is not supported on Windows platforms.

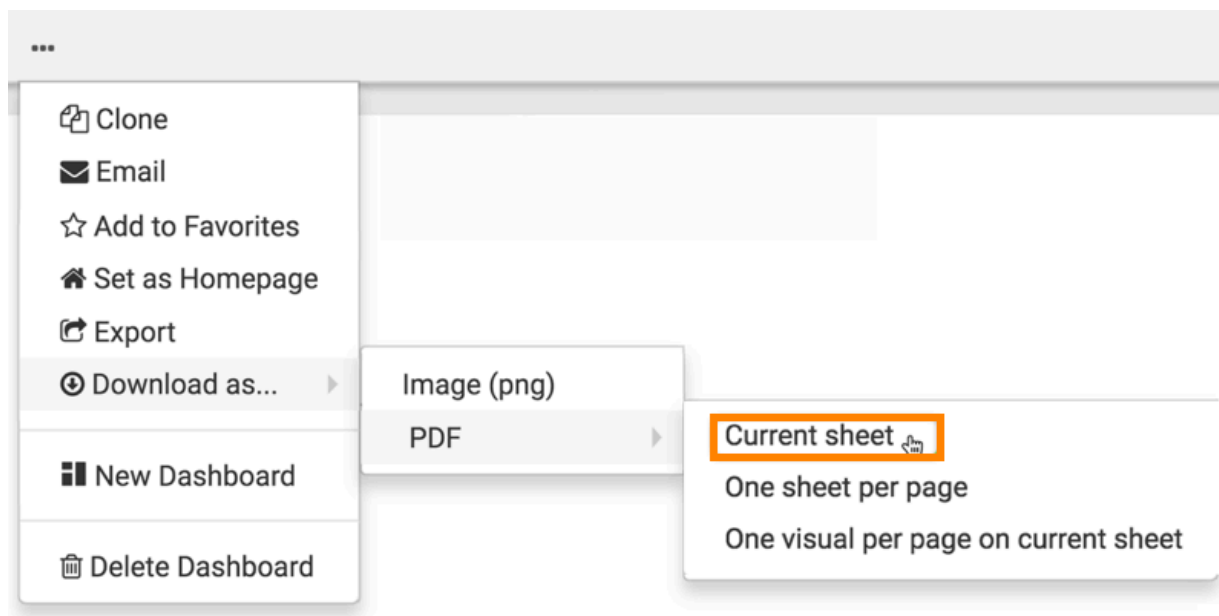
In the following example, you can see how to download the current sheet (sheet 1) of the dashboard.

Before you begin

Before you download the sheet as a PDF file, make sure the download feature is enabled in site settings. For instructions, see [Snapshots in Managing dashboard site settings](#).

Procedure

1. Open the dashboard and click **...** in the top-right corner of the dashboard to open the supplemental menu.
2. Click **Download as... PDF Current Sheet**.



This action initiates the download of the active sheet and a message appears: Generating the requested file. Cloudera Data Visualization saves the current sheet of the dashboard as a PDF file.

You can reach the same action using the **...** icon in the Dashboard Designer top menu bar.

3. When the download is complete, open your browser's default download folder.

In this example, the generated filename, PDF Export_20250205135933.pdf, has the following components:

- PDF Export: Same as the visual name
- 20250205: Date of download in YYYYMMDD format
- 135933: Time of download in hhmmss format

If the sheet name contains characters not supported by your file system (for example slashes), Cloudera Data Visualization replaces them automatically. For example:

- Original sheet name: PDF/Export
- Generated file name: PDF Export_20250205135933.pdf (Forward slash / is replaced with a space.)

Downloading all sheets as one PDF file

Cloudera Data Visualization allows you to download the entire dashboard as a single PDF file, with each sheet rendered on a separate page.

About this task



Note:

- Custom JavaScript visual snapshots are supported only if written in ECMAScript 5.
- PDF download is not supported on Windows platforms.

In the following example, you can see how to download sheet 1 and sheet 2 of the dashboard on separate pages.

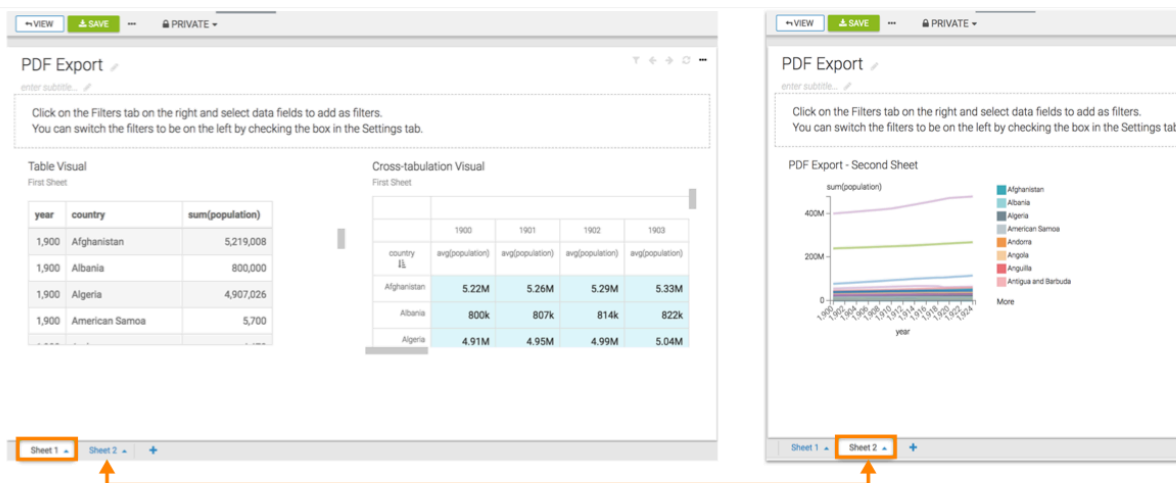
Before you begin

Before you download the dashboard as a PDF file, make sure the download feature is enabled in site settings. For instructions, see [Snapshots in Managing dashboard site settings](#).

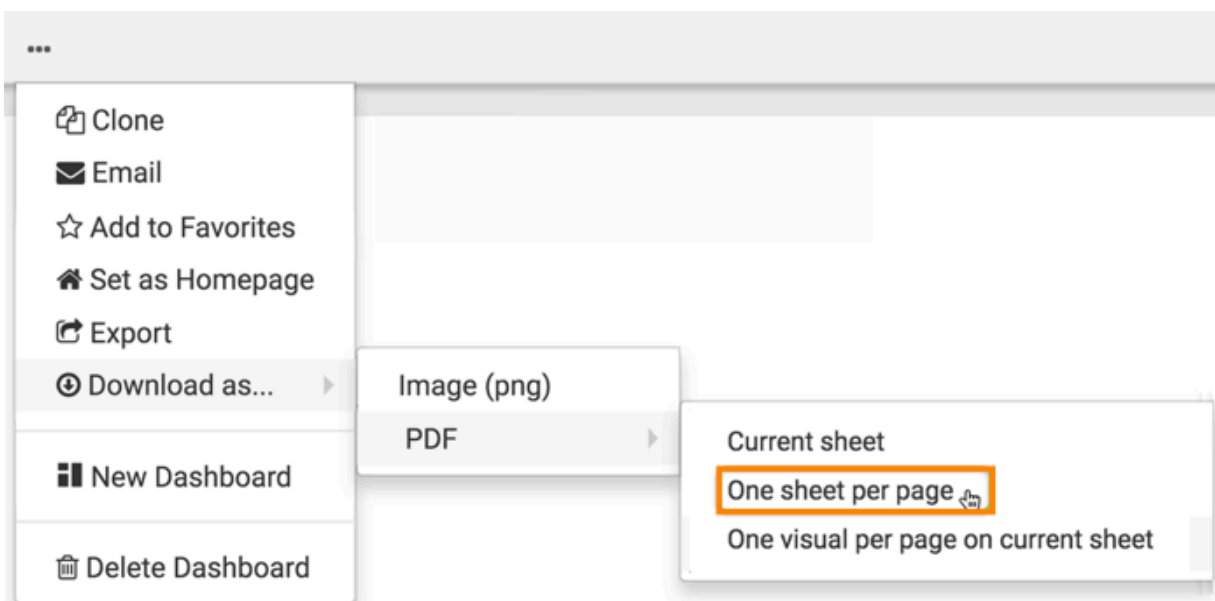
Procedure

1. Open the dashboard.

In this example, the PDF Export dashboard has two sheets.



2. Click **...** in the top-right corner of the dashboard to open the supplemental menu and select **Download as... PDF One sheet per page**.



This action initiates the download of the dashboard and a message appears: Generating the requested file. Cloudera Data Visualization saves the dashboard sheets to a multi-page PDF file, with each sheet on a separate page in the output.

3. When the download is complete, open your browser's default download folder.

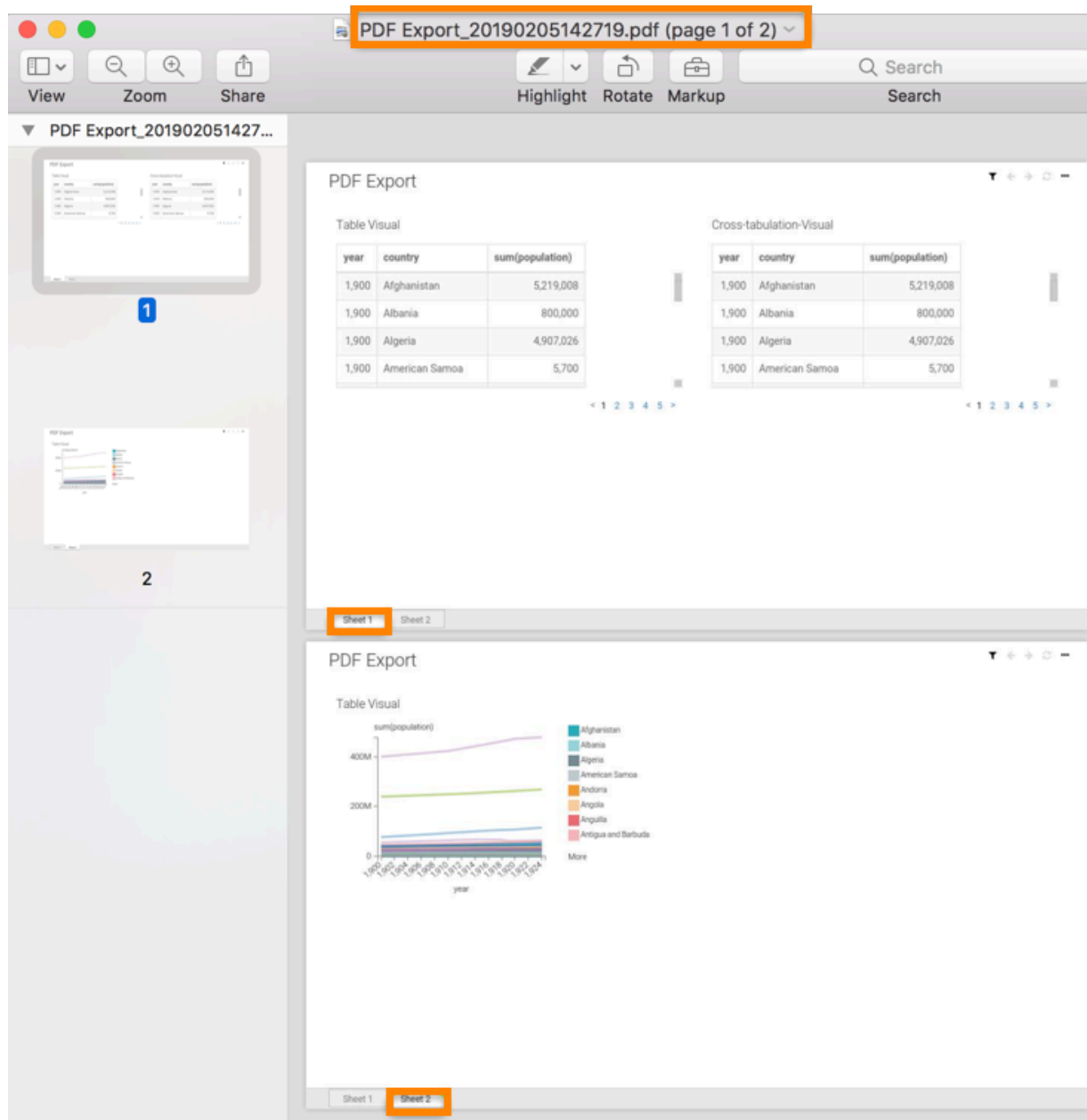
The filename is the same as the name of the dashboard, and it has a timestamp specifying the date and time when the file is created. Each sheet of the dashboard is on a separate page.

In this example, the generated filename, PDF Export_20190205142719.pdf, has the following components:

- PDF Export: Same as the dashboard name
- 20190205: Date of download in YYYYMMDD format
- 142719: Time of download in hhmmss format

If the dashboard name contains characters not supported by your file system (for example slashes), Cloudera Data Visualization replaces them automatically. For example:

- Original dashboard name: PDF/Export
- Generated file name: PDF Export_20190205142719.pdf (Forward slash / is replaced with a space.)



Downloading current sheet as a PDF file with each visual on a separate page

Cloudera Data Visualization allows you to download the current sheet of a dashboard as a PDF file, with each visual from the sheet placed on a separate page. This is useful when you want to present visuals individually while preserving the context of the sheet.

About this task



Note:

- Custom JavaScript visual snapshots are supported only if written in ECMAScript 5.
- PDF download is not supported on Windows platforms.

Before you begin

Before you download the dashboard as a PDF file, make sure the download feature is enabled in site settings. For instructions, see [Snapshots in Managing dashboard site settings](#).

Procedure

1. Open the dashboard.

In this example, Sheet 1 of the PDF Export dashboard has two visuals.

PDF Export

Click on the Filters tab on the right and select data fields to add as filters.
You can switch the filters to be on the left by checking the box in the Settings tab.

Table Visual
First Sheet

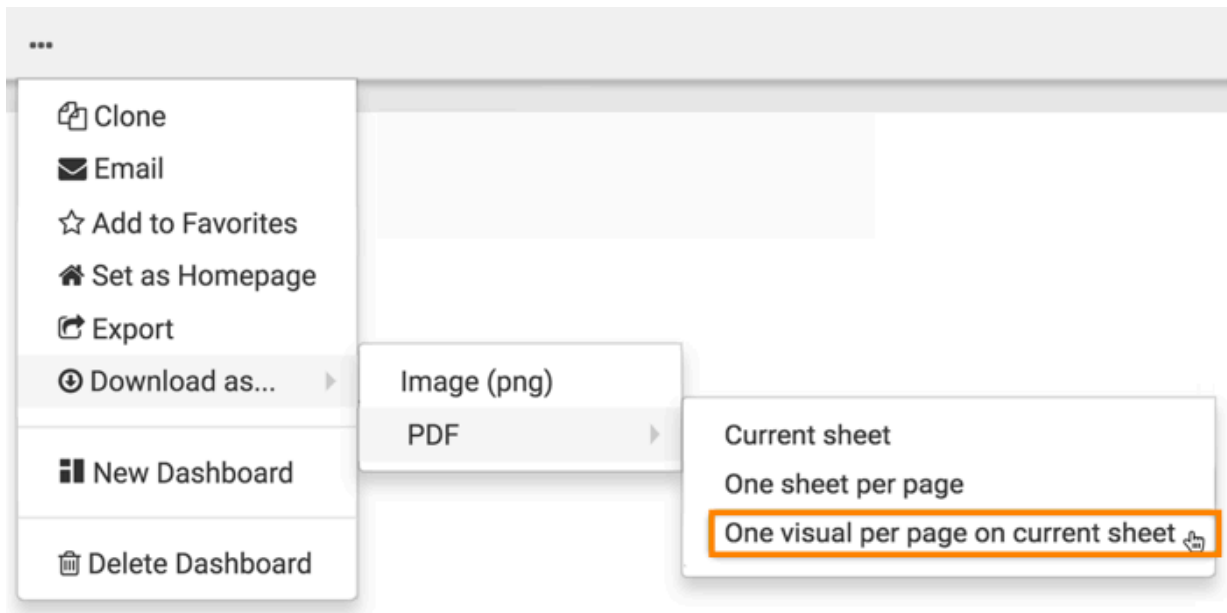
year	country	sum(population)
1,900	Afghanistan	5,219,008
1,900	Albania	800,000
1,900	Algeria	4,907,026
1,900	American Samoa	5,700

Cross-tabulation Visual
First Sheet

	1900	1901	1902	1903
country	avg(population)	avg(population)	avg(population)	avg(population)
Afghanistan	5.22M	5.26M	5.29M	5.33M
Albania	800k	807k	814k	822k
Algeria	4.91M	4.95M	4.99M	5.04M

Sheet 1 Sheet 2

2. Click **...** in the top-right corner of the dashboard to open the supplemental menu and select **Download as... PDF** **One visual per page on current sheet**.



This action initiates the download of the current sheet and a message appears: Generating the requested file. Cloudera Data Visualization saves the sheet as a multi-page PDF file, including each visual on a separate page in the output.

3. When the download is complete, open your browser's default download folder.

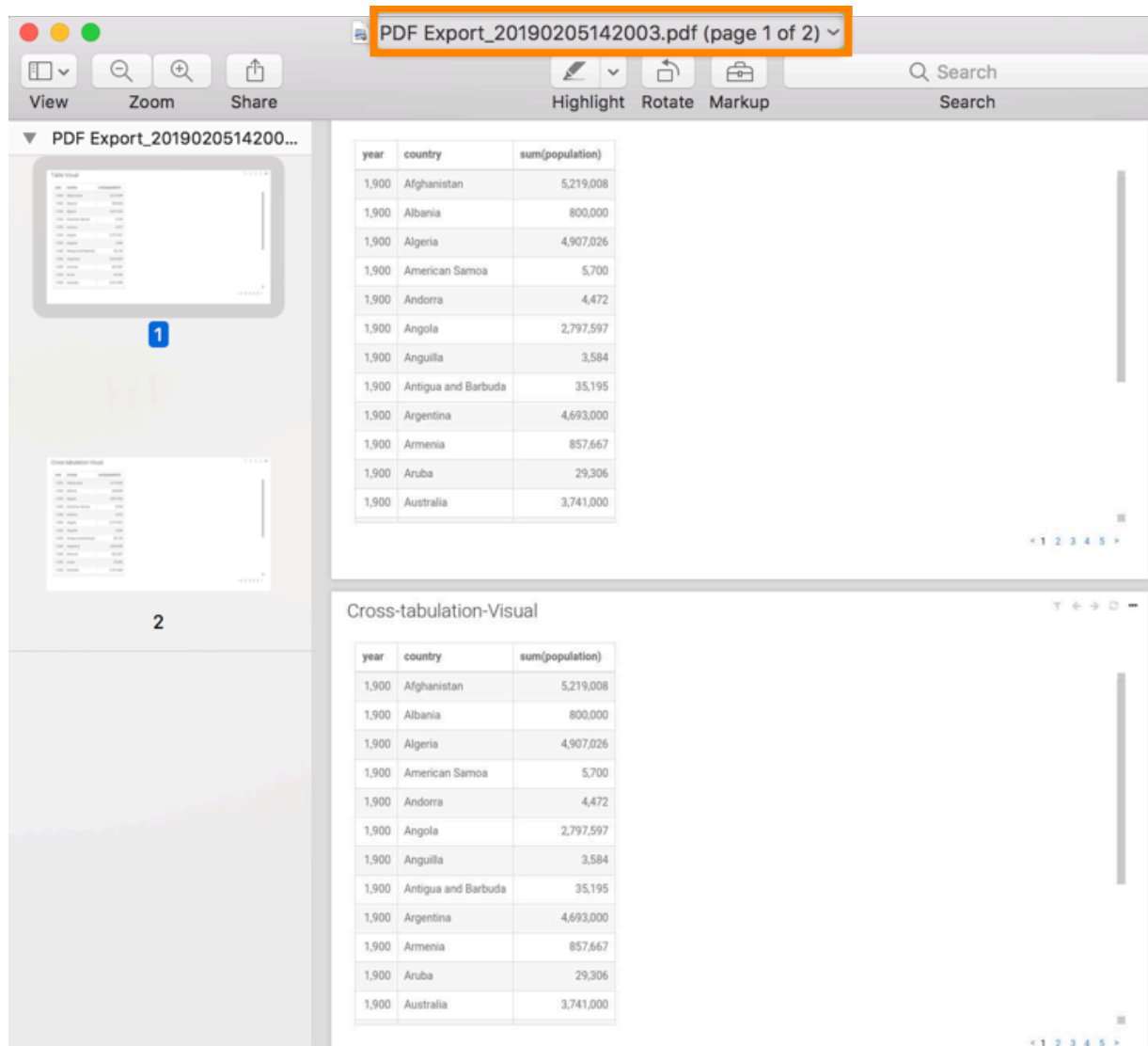
The filename is the same as the name of the dashboard, and it has a timestamp specifying the date and time when the file is created. Each visual of the dashboard sheet is on a separate page.

In this example, the generated filename, PDF Export_20190205142003.pdf, has the following components:

- PDF Export: Same as the dashboard name
- 20190205: Date of download in YYYYMMDD format
- 142003: Time of download in hhmmss format

If the dashboard name contains characters not supported by your file system (for example slashes), Cloudera Data Visualization replaces them automatically. For example:

- Original sheet name: PDF/Export
- Generated file name: PDF Export_20190205142003.pdf (Forward slash / is replaced with a space.)



Emailing sheets

Cloudera Data Visualization enables you to share dashboards through email. You can send them immediately, schedule them at specific times and intervals, or through a triggered response when reaching a specific monitored threshold.

Before you begin

Before using the email function, you must enable the feature in site settings. For instructions, see *Email settings*.



Note: This setting is only available for users with administrative privileges.

Complete these prerequisites in your system configuration:

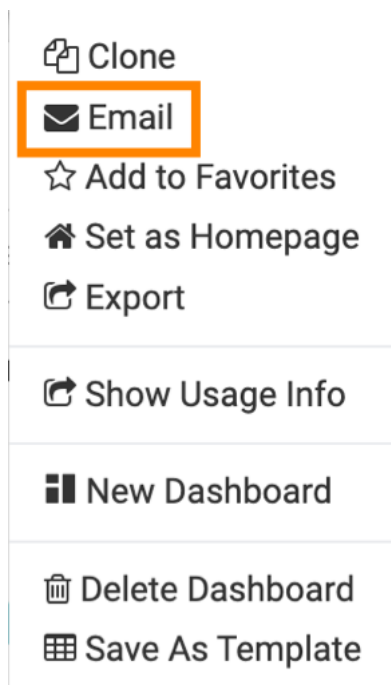
- Enable screenshot and thumbnail downloads. For instructions, see *Snapshots*.
- Enable email functionality. For instructions, see *Email settings*.
- Enable scheduled jobs. For instructions, see *Enabling scheduled jobs*.



Note: You can only email one dashboard sheet at a time, but if you have more sheets on your dashboard, you can repeat this procedure for each sheet.

Procedure

1. Select the sheet you want to share in email by clicking on its tab at the bottom left corner of the Dashboard Designer interface.
2. In the top menu bar, click the **...** icon to open the supplemental menu and select Email.



The Send sheet modal window appears.

3. Choose one of the two options for sending email.

Email now – For instructions on how to provide email details, see *Immediate email*.

Send sheet

Emailing Method

☒ Email now ☐ Schedule email

Email Details

To *

CC

From

vizapps_admin<viztest00@gmail.com>

Subject *

[Cloudera Data Visualization]

Email Template

Default Email Template

Preview Email Template

Message

Message

Show Job Parameters

Attach ?

☒ Embedded Image ☐ PNG ☐ PDF ☐ XLSX ☐ CSV

Advanced Settings

Cancel

Save

Schedule email – For instructions on how to provide email and schedule details, see *Schedule-based email*.

The image shows two versions of the 'Send sheet' dialog box. The left version is the 'Email Details' tab, which includes fields for 'To', 'CC', 'From' (pre-filled with 'vizapps_admin<viztest00@gmail.com>'), 'Subject' (pre-filled with '[Cloudera Data Visualization]'), 'Email Template' (set to 'Default Email Template'), 'Message', and 'Attach' (with 'Embedded Image' selected). The right version is the 'Schedule Details' tab, which includes fields for 'Name' and 'Schedule' (set to 'No Scheduling'). Both dialogs have 'Cancel' and 'Save' buttons at the bottom right.

4. After creating emails, you can monitor them in the Jobs interface, review their details, rerun, cancel, and so on.

For more information, see *Managing jobs*.

Related Information

[Email settings](#)

[Snapshots](#)

[Enabling scheduled jobs](#)

[Immediate email](#)

[Schedule-based email](#)


[Threshold-based email](#)

[Managing jobs](#)

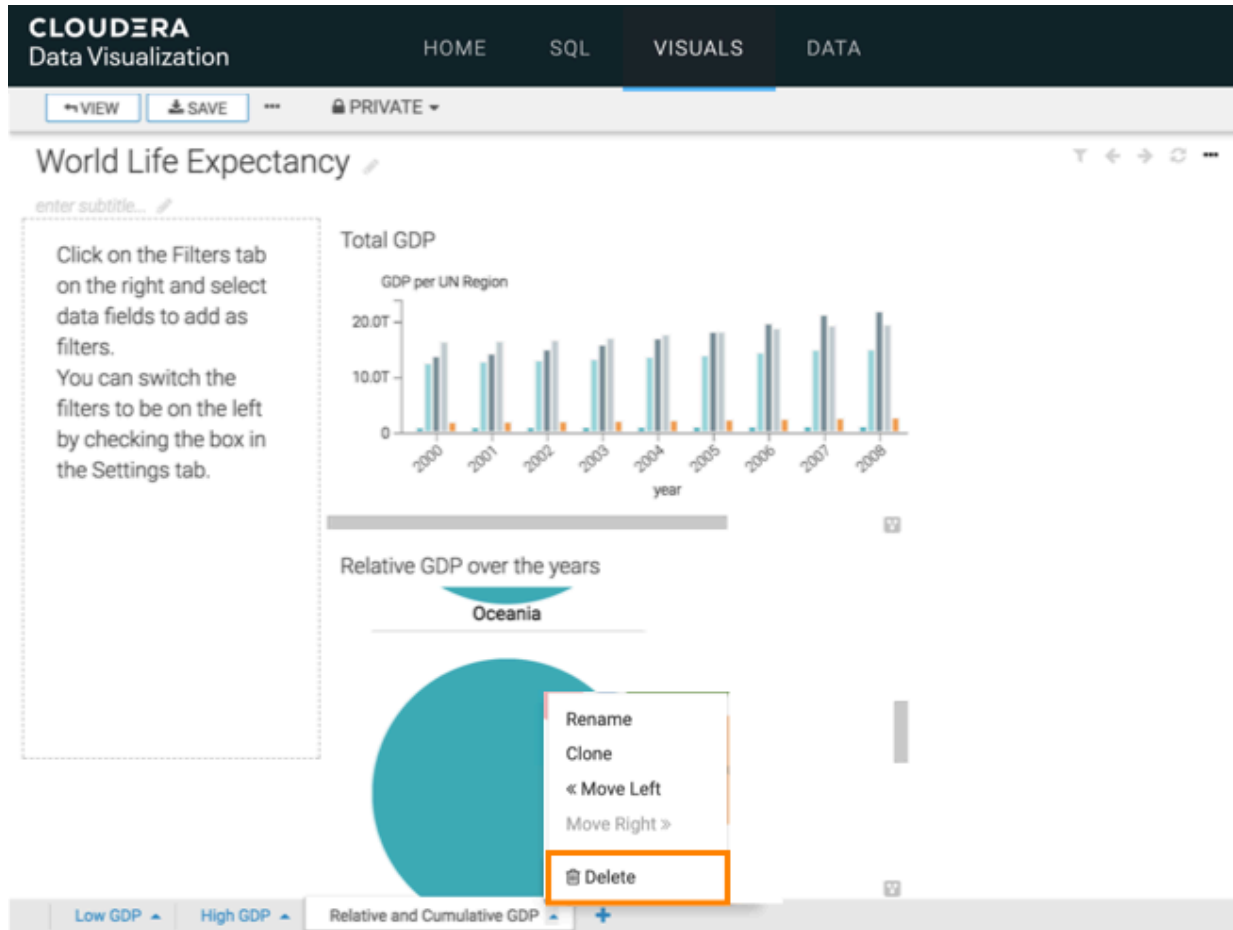
Deleting a sheet

Cloudera Data Visualization enables you to delete sheets from a dashboard.

Procedure

1. Open a dashboard in Edit mode.
2. Click the  icon on tab of the sheet that you want to remove.

3. In the sheet management menu, click Delete.



4. Click SAVE to save all changes made.

Results

After saving the dashboard, you can see that the deleted sheet is no longer visible.