

## Customizing Homepages

Date published: 2020-10-30

Date modified: 2025-09-30

# CLOUDERA

# Legal Notice

© Cloudera Inc. 2025. All rights reserved.

The documentation is and contains Cloudera proprietary information protected by copyright and other intellectual property rights. No license under copyright or any other intellectual property right is granted herein.

Unless otherwise noted, scripts and sample code are licensed under the Apache License, Version 2.0.

Copyright information for Cloudera software may be found within the documentation accompanying each component in a particular release.

Cloudera software includes software from various open source or other third party projects, and may be released under the Apache Software License 2.0 (“ASLv2”), the Affero General Public License version 3 (AGPLv3), or other license terms. Other software included may be released under the terms of alternative open source licenses. Please review the license and notice files accompanying the software for additional licensing information.

Please visit the Cloudera software product page for more information on Cloudera software. For more information on Cloudera support services, please visit either the Support or Sales page. Feel free to contact us directly to discuss your specific needs.

Cloudera reserves the right to change any products at any time, and without notice. Cloudera assumes no responsibility nor liability arising from the use of products, except as expressly agreed to in writing by Cloudera.

Cloudera, Cloudera Altus, HUE, Impala, Cloudera Impala, and other Cloudera marks are registered or unregistered trademarks in the United States and other countries. All other trademarks are the property of their respective owners.

Disclaimer: EXCEPT AS EXPRESSLY PROVIDED IN A WRITTEN AGREEMENT WITH CLOUDERA, CLOUDERA DOES NOT MAKE NOR GIVE ANY REPRESENTATION, WARRANTY, NOR COVENANT OF ANY KIND, WHETHER EXPRESS OR IMPLIED, IN CONNECTION WITH CLOUDERA TECHNOLOGY OR RELATED SUPPORT PROVIDED IN CONNECTION THEREWITH. CLOUDERA DOES NOT WARRANT THAT CLOUDERA PRODUCTS NOR SOFTWARE WILL OPERATE UNINTERRUPTED NOR THAT IT WILL BE FREE FROM DEFECTS NOR ERRORS, THAT IT WILL PROTECT YOUR DATA FROM LOSS, CORRUPTION NOR UNAVAILABILITY, NOR THAT IT WILL MEET ALL OF CUSTOMER’S BUSINESS REQUIREMENTS. WITHOUT LIMITING THE FOREGOING, AND TO THE MAXIMUM EXTENT PERMITTED BY APPLICABLE LAW, CLOUDERA EXPRESSLY DISCLAIMS ANY AND ALL IMPLIED WARRANTIES, INCLUDING, BUT NOT LIMITED TO IMPLIED WARRANTIES OF MERCHANTABILITY, QUALITY, NON-INFRINGEMENT, TITLE, AND FITNESS FOR A PARTICULAR PURPOSE AND ANY REPRESENTATION, WARRANTY, OR COVENANT BASED ON COURSE OF DEALING OR USAGE IN TRADE.

# Contents

<b>Setting your homepage from a dashboard.....</b>	<b>4</b>
<b>Setting your homepage on the Set Homepage interface.....</b>	<b>5</b>
<b>Setting a default homepage for all users.....</b>	<b>5</b>
<b>Resetting homepage to default.....</b>	<b>6</b>

## Setting your homepage from a dashboard

In Cloudera Data Visualization, all users can change their home screen by selecting the current dashboard.

### About this task



#### Important:

- The Set as Homepage option is only available if the administrator has not disabled homepage user-override. For more information, see *Setting a default homepage for all users*.
- The homepage set by a general user overwrites the default set by an administrator.

The following steps demonstrate how to set your own homepage directly from the dashboard you are viewing or editing.

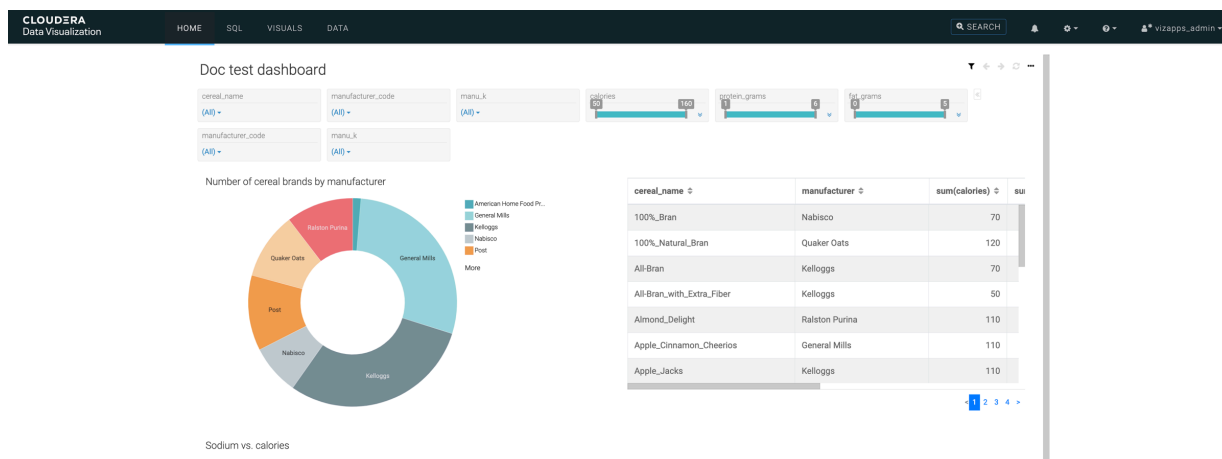
### Procedure

1. While viewing or editing a dashboard, click the supplemental menu, and select Set as Homepage.

The screenshot shows the Cloudera Data Visualization interface. At the top, there's a navigation bar with 'HOME', 'SQL', 'VISUALS', and 'DATA'. Below this, a dashboard titled 'Doc test dashboard' is displayed. On the left side of the dashboard, there's a supplemental menu with options: Clone, Email, Add to Favorites, Set as Homepage (highlighted with an orange box), Export, Download as..., Show Usage Info, New Dashboard, and Delete Dashboard. The dashboard content includes several input fields for 'cereal\_name', 'manufacturer\_code', and 'manu\_k', each with a '(All)' dropdown. Below these fields is a donut chart titled 'Number of cereal brands by manufacturer'. The chart shows segments for American Home Food Pr..., General Mills, Kelloggs, Nabisco, Post, Quaker Oats, and Ralston Purina. A legend on the right lists the manufacturers: American Home Food Pr..., General Mills, Kelloggs, Nabisco, Post, and More.

A message confirming the success of setting the dashboard as your homepage appears briefly.

- Click HOME at the top navigation bar to check that the dashboard you just specified appears.



### Related Information

[Setting a default homepage for all users](#)

## Setting your homepage on the Set Homepage interface

In Cloudera Data Visualization, all users can change their home screen on the Set Homepage interface.

### About this task



#### Important:

- The Set Homepage option is only available if the administrator has not disabled homepage user-override. For more information, see *Setting a default homepage for all users*.
- The homepage set by a general user overwrites the default set by an administrator.

The following steps show you how to set your own homepage from the Settings menu.

### Procedure

- On the main navigation bar, click the Gear icon to open the Settings menu.
- Click Set Homepage in the drop-down menu.

The Set Homepage interface appears.

- Select the dashboard from the list to use for the homepage.
- Click SAVE.

A message confirming the success of setting the dashboard as your homepage appears briefly.

- Click HOME at the top navigation bar to check that the dashboard you just specified appears.

### Related Information

[Setting a default homepage for all users](#)

## Setting a default homepage for all users

In Cloudera Data Visualization, administrators can change the users' default landing page globally.

### About this task



**Note:** This feature is only available to users with administrative privileges.

The following steps show you how to set the default start page to a specific dashboard for all users.

### Procedure

1. Log in as an admin user.
2. On the main navigation bar, click the Gear icon to open the Settings menu.
3. Click Set Homepage in the drop-down menu.  
The Set Homepage interface appears.
4. Scroll down to the Admin Only section and select the dashboard that you want to use as the new default homepage.
5. Click SAVE.  
A message confirming the success of setting the dashboard as your homepage appears briefly.
6. If you mark Disable user-override of homepage, you can prevent users from overriding the default homepage that you have set.
7. Log out from CDV and log in as a user with simple viewing privileges.
8. If this user does not have a custom homepage set, clicking HOME at the top navigation bar takes you to the new default homepage you have just specified.

## Resetting homepage to default

Both users and administrators can change the Cloudera Data Visualization homepage back to its default value.

### Procedure

Resetting your own homepage to default

When a simple user resets their homepage to default, it reverts to the setting that applies to all users.

The following steps demonstrate how you can set your homepage back to default:

1. Log in as a user with simple viewing privileges.
2. On the main navigation bar, click the Gear icon to open the Settings menu.
3. Click Set Homepage in the drop-down menu.  
The Set Homepage interface appears.
4. Click Reset to admin-defined homepage.  
You can see that the dashboard changes to the default global homepage.  
A message confirming the success of setting the dashboard to the admin-defined default appears briefly.
5. Click HOME at the top navigation bar to check that the admin-defined dashboard you have just specified appears.  
The HOME view changes to the default homepage defined by the administrator.

Resetting all user's homepages to Cloudera Data Visualization default

When an administrator resets the homepage to the default homepage, the new homepage will be the original Cloudera Data Visualization starting page for all users.

6. Log in as an admin user.
7. On the main navigation bar, click the Gear icon to open the Settings menu.

8. Click Set Homepage in the drop-down menu.

The Set Homepage interface appears.

9. Scroll down to the Admin Only section.

10. Click Reset to default homepage.

A message confirming the success of setting the homepage to default appears briefly.

11. If you mark Disable user-override of homepage, you can prevent users from overriding the default homepage that you have set.

A message confirming the success of setting the dashboard as your homepage appears briefly.

12. Log out from CDV and log in as a user with simple viewing privileges.

13. Log in as a user with simple viewing privileges.

14. If the user does not have a custom homepage set, clicking HOME at the top navigation bar takes you to the Cloudera Data Visualization Welcome page you as an admin have just reset.

## Set Homepage

Set the Dashboard you would like as your homepage

Dashboard:

Time & Industry Threat View (id: 27)



VIEW

SAVE

[Reset to admin-defined homepage](#)

### Admin Only

Set the default homepage for all users

Dashboard:

Data Visualization Welcome Page



VIEW

SAVE



[Reset to default homepage](#)

☐ Disable user-override of homepage